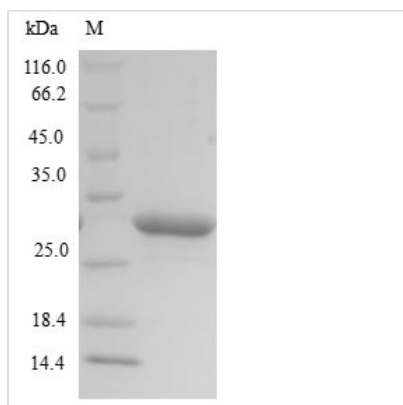


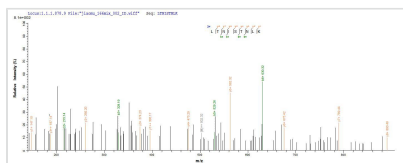


# Recombinant Mannheimia haemolytica Leukotoxin (lktA), Partial

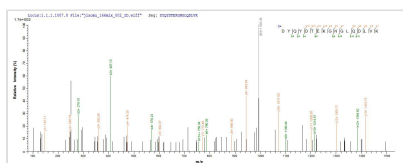
|                          |  |
|--------------------------|--|
| <b>Product Code</b>      | CSB-EP346605ESE  |
| <b>Relevance</b>         | Pasteurella leukotoxins are exotoxins that attack host leukocytes and especially polymorphonuclear cells, by causing cell rupture. The leukotoxin binds to the host LFA-1 integrin and induces a signaling cascade leading to many biological effects, including tyrosine phosphorylation of the CD18 tail, elevation of the intracellular Ca <sup>2+</sup> and lysis of the host cell. This leukotoxin is a major contributor to the pathogenesis of lung injury in ovine pneumonic pasteurellosis. It has also weak hemolytic activity |
| <b>Abbreviation</b>      | Recombinant Mannheimia haemolytica lktA protein, partial   |
| <b>Storage</b>           | The shelf life is related to many factors, storage state, buffer ingredients, storage temperature and the stability of the protein itself. Generally, the shelf life of liquid form is 6 months at -20°C/-80°C. The shelf life of lyophilized form is 12 months at -20°C/-80°C.  |
| <b>Uniprot No.</b>       | P55118   |
| <b>Product Type</b>      | Recombinant Protein  |
| <b>Immunogen Species</b> | Mannheimia haemolytica (Pasteurella haemolytica)   |
| <b>Purity</b>            | Greater than 90% as determined by SDS-PAGE.  |
| <b>Sequence</b>          | MGNKLTNISTNLKSSWLTAKSGLNRTGQSLAKAGQSLKTGAKKIILYIPKDYQY<br>DTEKGNGQLQDLVKAAEELGIEVQKEEGNDIAKAQTS LGTIQNVLGLTERGIVLS<br>APQLDKLLQKTKVGQAIGSAENLTGFSNAKTVLSGIQSILGSVLAGMDLDEAL<br>QKNSNELTLAKAGLELTNSLIENIANSVKTLDAFGDQINQLGSKLQNVKGLSSL<br>GDKLKGLSGFDKT   |
| <b>Research Area</b>     | others   |
| <b>Source</b>            | E.coli   |
| <b>Target Names</b>      | lktA   |
| <b>Protein Names</b>     | Recommended name: Leukotoxin Short name= Lkt   |
| <b>Expression Region</b> | 1-229aa  |
| <b>Notes</b>             | Repeated freezing and thawing is not recommended. Store working aliquots at 4°C for up to one week.  |
| <b>Tag Info</b>          | N-terminal 10xHis-tagged and C-terminal Myc-tagged   |
| <b>Mol. Weight</b>       | 29.2kDa  |
| <b>Protein Length</b>    | Partial  |
| <b>Image</b>             |  |



(Tris-Glycine gel) Discontinuous SDS-PAGE (reduced) with 5% enrichment gel and 15% separation gel.



Based on the SEQUEST from database of E.coli host and target protein, the LC-MS/MS Analysis result of CSB-EP346605ESE could indicate that this peptide derived from E.coli-expressed Mannheimia haemolytica (Pasteurella haemolytica) lktA.



Based on the SEQUEST from database of E.coli host and target protein, the LC-MS/MS Analysis result of CSB-EP346605ESE could indicate that this peptide derived from E.coli-expressed Mannheimia haemolytica (Pasteurella haemolytica) lktA.

## Reconstitution

We recommend that this vial be briefly centrifuged prior to opening to bring the contents to the bottom. Please reconstitute protein in deionized sterile water to a concentration of 0.1-1.0 mg/mL. We recommend to add 5-50% of glycerol (final concentration) and aliquot for long-term storage at -20°C/-80°C. Our default final concentration of glycerol is 50%. Customers could use it as reference.

## Shelf Life

The shelf life is related to many factors, storage state, buffer ingredients, storage temperature and the stability of the protein itself. Generally, the shelf life of liquid form is 6 months at -20°C/-80°C. The shelf life of lyophilized form is 12 months at -20°C/-80°C.