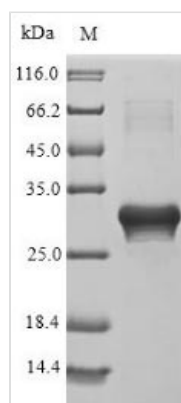




# Recombinant Parietaria judaica Probable non-specific lipid-transfer protein 2 (LTP2)

|                          |   |
|--------------------------|---|
| <b>Product Code</b>      | CSB-EP345923ESB   |
| <b>Relevance</b>         | Plant non-specific lipid-transfer proteins transfer phospholipids as well as galactolipids across membranes. May play a role in wax or cutin deposition in the cell walls of expanding epidermal cells and certain secretory tissues.   |
| <b>Abbreviation</b>      | Recombinant Parietaria judaica LTP2 protein   |
| <b>Storage</b>           | The shelf life is related to many factors, storage state, buffer ingredients, storage temperature and the stability of the protein itself. Generally, the shelf life of liquid form is 6 months at -20°C/-80°C. The shelf life of lyophilized form is 12 months at -20°C/-80°C. |
| <b>Uniprot No.</b>       | P55958  |
| <b>Product Type</b>      | Recombinant Protein   |
| <b>Immunogen Species</b> | Parietaria judaica (Pellitory-of-the-wall) (Parietaria diffusa)   |
| <b>Purity</b>            | Greater than 85% as determined by SDS-PAGE.   |
| <b>Sequence</b>          | EEACGKVVQDIMPCLEHFKGEEKEPSKECCSGTKKLSEEVKTTEQKREACKCI<br>VRATKGISGIKNELVAEVPKKCDIKTTLPITADFDCSKIQSTIFRGYY   |
| <b>Research Area</b>     | others  |
| <b>Source</b>            | E.coli  |
| <b>Protein Names</b>     | Allergen Par j II Major pollen allergen Par j 2.0101 Protein P2 Allergen: Par j 2.0101  |
| <b>Expression Region</b> | 32-133aa  |
| <b>Notes</b>             | Repeated freezing and thawing is not recommended. Store working aliquots at 4°C for up to one week.   |
| <b>Tag Info</b>          | N-terminal 6xHis-SUMO-tagged  |
| <b>Mol. Weight</b>       | 27.3 kDa  |
| <b>Protein Length</b>    | Full Length of Mature Protein   |

## Image



(Tris-Glycine gel) Discontinuous SDS-PAGE (reduced) with 5% enrichment gel and 15% separation gel.



---

**Reconstitution**

We recommend that this vial be briefly centrifuged prior to opening to bring the contents to the bottom. Please reconstitute protein in deionized sterile water to a concentration of 0.1-1.0 mg/mL. We recommend to add 5-50% of glycerol (final concentration) and aliquot for long-term storage at -20°C/-80°C. Our default final concentration of glycerol is 50%. Customers could use it as reference.

---

**Shelf Life**

The shelf life is related to many factors, storage state, buffer ingredients, storage temperature and the stability of the protein itself. Generally, the shelf life of liquid form is 6 months at -20°C/-80°C. The shelf life of lyophilized form is 12 months at -20°C/-80°C.