



Recombinant Escherichia coli Constitutive lysine decarboxylase (IdcC) (Active)

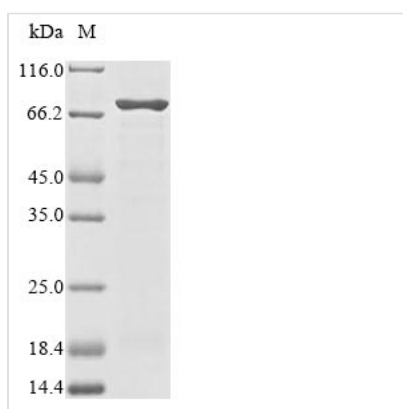
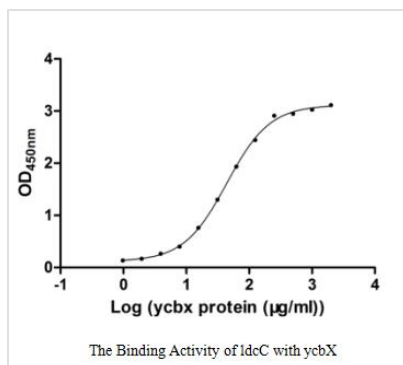
Product Code	CSB-EP345171ENVc7
Relevance	LDC is constitutively but weakly expressed under various conditions.
Abbreviation	Recombinant E.coli IdcC protein (Active)
Storage	The shelf life is related to many factors, storage state, buffer ingredients, storage temperature and the stability of the protein itself. Generally, the shelf life of liquid form is 6 months at -20°C/-80°C. The shelf life of lyophilized form is 12 months at -20°C/-80°C.
Uniprot No.	P52095
Product Type	Other
Immunogen Species	Escherichia coli (strain K12)
Biological Activity	Measured by its binding ability in a functional ELISA. Immobilized IdcC at 2 µg/ml can bind human ycbX, the EC50 of human ycbX protein is 40.54-47.97 µg/ml.
Purity	Greater than 85% as determined by SDS-PAGE.
Sequence	MNIIAIMGPHGVFYKDEPIKELESALVAQGFQIIWPQNSVDLLKFIEHNPRICGVI FDWDEYSLDLCSDINQLNEYLPYAFINTHSTMDVSVQDMRMALWFFEYALG QAEDIAIRMRQYTDEYLDNITPPFTKALFTYVKERKYTFCTPGHMGGTAYQKSP VGCLFYDFFGGNTLKADVSISVTELGSLDHTGPHLEAEEYIARTFGAEQSYIVT NGTSTSNKIVGMYAAPSGSTLLIDRNCHKSLAHLMMNDVVPVWLKPTRNALG ILGGIPRREFTRDSIEEKVAATTQAQWPVHAVITNSTYDGLLYNTDWIKQTLDV PSIHFDASAWVPYTHFHPIYQGKSGMSGERVAGKVIFETQSTHKMLAALSQASLI HIKGEYDEEAFNEAFMMHTTTSPSYPIVASVETAAMLRGNGPKRLINRSVER ALHFRKEVQRLREESDQWFFDIWQPPQVDEAECWPVAPGEQWHGFNDADA DHMFLDPVKVTILTPGMDEQGNMSEEGIPAALVAKFLDERGIVVEKTGPYNLLF LFSIGIDKTKAMGLLRGLTEFKRSYDLNLRIKNMLPDLYAEDPDFYRNMRIQDLA QGIHKLIRKHDLPGLMLRAFDLPEMIMTPHQAWQRQIKGEVETIALEQLVGRV SANMILPYPPGVPLLMPGEMLTKESTVLDLFLMLCSVGQHYPGFETDIHGAK QDEDGVYRVRVLKMAG
Research Area	Others
Source	E.coli
Target Names	IdcC
Expression Region	1-713aa
Notes	Repeated freezing and thawing is not recommended. Store working aliquots at 4°C for up to one week.
Tag Info	C-terminal 6xHis-tagged
Mol. Weight	82.6 kDa



Protein Length

Full Length

Image



(Tris-Glycine gel) Discontinuous SDS-PAGE (reduced) with 5% enrichment gel and 15% separation gel.

Reconstitution

We recommend that this vial be briefly centrifuged prior to opening to bring the contents to the bottom. Please reconstitute protein in deionized sterile water to a concentration of 0.1-1.0 mg/mL. We recommend to add 5-50% of glycerol (final concentration) and aliquot for long-term storage at -20°C/-80°C. Our default final concentration of glycerol is 50%. Customers could use it as reference.

Shelf Life

The shelf life is related to many factors, storage state, buffer ingredients, storage temperature and the stability of the protein itself. Generally, the shelf life of liquid form is 6 months at -20°C/-80°C. The shelf life of lyophilized form is 12 months at -20°C/-80°C.