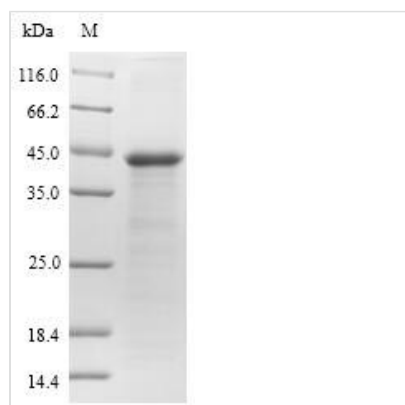




Recombinant Arabidopsis thaliana Osmotin-like protein OSM34 (OSM34)

Product Code	CSB-EP342308DOA
Abbreviation	Recombinant Mouse-ear cress OSM34 protein
Storage	The shelf life is related to many factors, storage state, buffer ingredients, storage temperature and the stability of the protein itself. Generally, the shelf life of liquid form is 6 months at -20°C/-80°C. The shelf life of lyophilized form is 12 months at -20°C/-80°C.
Uniprot No.	P50700
Product Type	Recombinant Protein
Immunogen Species	Arabidopsis thaliana (Mouse-ear cress)
Purity	Greater than 90% as determined by SDS-PAGE.
Sequence	ATFEILNQCSYTVWAAASPGGGRRLDAGQSWRLDVAAGTKMARIWGRTNCN FDSSGRGRCQTGDCSGGLQCTGWGQPPNTLAEYALNQFNNLDFYDISLVDG FNIPMEFSPTSSNCHRILCTADINGQCPNVLRAPGGCANNPCTVFQTNQYCCTN GGGSCSDTEYSRFFKQRCPDAYSYPQDDPTSTFTCTNTNYRVVFCPR SRLGA TGS HQLPIKMVTEEN
Research Area	Others
Source	E.coli
Target Names	OSM34
Protein Names	Recommended name: Osmotin-like protein OSM34
Expression Region	23-244aa
Notes	Repeated freezing and thawing is not recommended. Store working aliquots at 4°C for up to one week.
Tag Info	N-terminal 10xHis-SUMO-tagged and C-terminal Myc-tagged
Mol. Weight	44.4kDa
Protein Length	Full Length of Mature Protein

Image



(Tris-Glycine gel) Discontinuous SDS-PAGE (reduced) with 5% enrichment gel and 15% separation gel.



Reconstitution

We recommend that this vial be briefly centrifuged prior to opening to bring the contents to the bottom. Please reconstitute protein in deionized sterile water to a concentration of 0.1-1.0 mg/mL. We recommend to add 5-50% of glycerol (final concentration) and aliquot for long-term storage at -20°C/-80°C. Our default final concentration of glycerol is 50%. Customers could use it as reference.

Shelf Life

The shelf life is related to many factors, storage state, buffer ingredients, storage temperature and the stability of the protein itself. Generally, the shelf life of liquid form is 6 months at -20°C/-80°C. The shelf life of lyophilized form is 12 months at -20°C/-80°C.