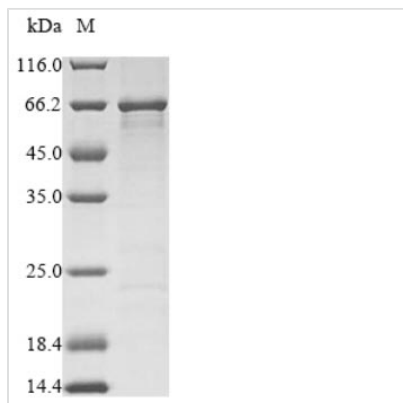


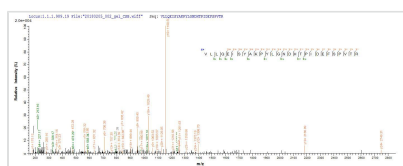


Recombinant Clostridium botulinum Botulinum neurotoxin type F (botF), partial

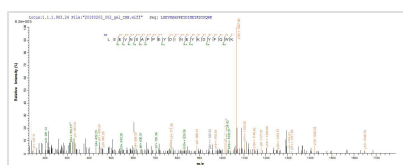
Product Code	CSB-EP341192CLQ
Relevance	Botulinum toxin acts by inhibiting neurotransmitter release. It binds to peripheral neuronal synapses, is internalized and moves by retrograde transport up the axon into the spinal cord where it can move between postsynaptic and presynaptic neurons. It inhibits neurotransmitter release by acting as a zinc endopeptidase that catalyzes the hydrolysis of the '58-Gln- -Lys-59' bond of synaptobrevins-1 and -2.
Abbreviation	Recombinant Clostridium botulinum botF protein, partial
Storage	The shelf life is related to many factors, storage state, buffer ingredients, storage temperature and the stability of the protein itself. Generally, the shelf life of liquid form is 6 months at -20°C/-80°C. The shelf life of lyophilized form is 12 months at -20°C/-80°C.
Uniprot No.	P30996
Alias	Bontoxilysin-F
Product Type	Recombinant Protein
Immunogen Species	Clostridium botulinum
Purity	Greater than 90% as determined by SDS-PAGE.
Sequence	MPVAINSFNYNDPVNDDTILYMQIPYEEKSKKYYKA FEIMRNVWIIPERN TIGTN PSDFDPPASLKN GSSAYYDPNYLT TDAEKDRYLKTTIKLFKRINSNPAGKVLLQ EISYAKPYLGNDHTPID EFSVTRTTSVNIKLSTNVES SMLLNLLVLGAGPDIFE SCCYPVRKLIDPDVVYDPSNYGFGSINIVTFSPEY EYTFNDISGGHNSSTESFIA DPAISLAHELIALHGLYGARGVTYEETIEVKQAPLMIAEKPIRLEEFLTFGGQDL NIITSAMKEKIYNNLLANYEKIATRLSEVNSAPPEYDINEYKDYFQWKYGLDKNA DGSYTVNENKFNEIYKKLYSFTESDLANKFKVKCRNTYFIKYEFLKVPNLLDDDI YTVSEGFNIGNLAVNNRGQSIKLNPKIIDSIPDKGLVEKIVKFKCKSVIPRK
Source	E.coli
Target Names	botF
Expression Region	1-436aa
Notes	Repeated freezing and thawing is not recommended. Store working aliquots at 4°C for up to one week.
Tag Info	N-terminal 6xHis-tagged
Mol. Weight	53.6kDa
Protein Length	Partial
Image	



(Tris-Glycine gel) Discontinuous SDS-PAGE (reduced) with 5% enrichment gel and 15% separation gel.



Based on the SEQUEST from database of E.coli host and target protein, the LC-MS/MS Analysis result of CSB-EP341192CLQ could indicate that this peptide derived from E.coli-expressed Clostridium botulinum botF.



Based on the SEQUEST from database of E.coli host and target protein, the LC-MS/MS Analysis result of CSB-EP341192CLQ could indicate that this peptide derived from E.coli-expressed Clostridium botulinum botF.

Reconstitution

We recommend that this vial be briefly centrifuged prior to opening to bring the contents to the bottom. Please reconstitute protein in deionized sterile water to a concentration of 0.1-1.0 mg/mL. We recommend to add 5-50% of glycerol (final concentration) and aliquot for long-term storage at -20°C/-80°C. Our default final concentration of glycerol is 50%. Customers could use it as reference.

Shelf Life

The shelf life is related to many factors, storage state, buffer ingredients, storage temperature and the stability of the protein itself. Generally, the shelf life of liquid form is 6 months at -20°C/-80°C. The shelf life of lyophilized form is 12 months at -20°C/-80°C.