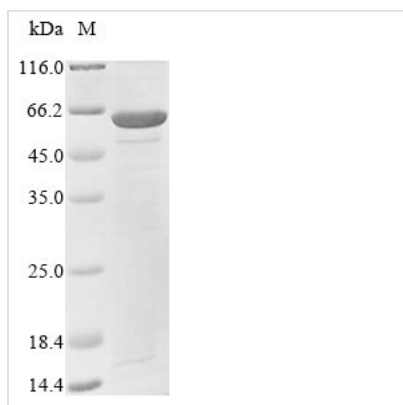


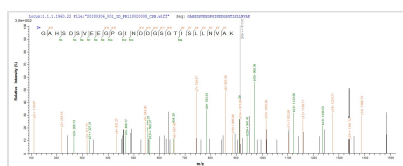


Recombinant *Saccharomyces cerevisiae* Aminopeptidase Y (APE3)

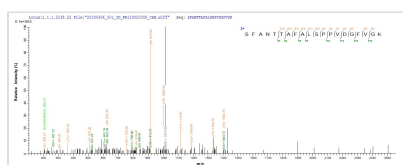
Product Code	CSB-EP339800SVG
Relevance	Present with 4740 molecules/cell in log phase SD medium.
Abbreviation	Recombinant <i>Saccharomyces cerevisiae</i> APE3 protein
Storage	The shelf life is related to many factors, storage state, buffer ingredients, storage temperature and the stability of the protein itself. Generally, the shelf life of liquid form is 6 months at -20°C/-80°C. The shelf life of lyophilized form is 12 months at -20°C/-80°C.
Uniprot No.	P37302
Product Type	Recombinant Protein
Immunogen Species	<i>Saccharomyces cerevisiae</i> (strain ATCC 204508 / S288c) (Baker's yeast)
Purity	Greater than 85% as determined by SDS-PAGE.
Sequence	IPKPHIPYFMKPHVESEKLQDKIKVDDLNATAWDLYRLANYSTPDYGHPTRVIG SKGHNKTMEYILNVFDDMQDYVDVSLQFEALSGKIISFNLSDAETGKSFANTT AFALSPVDGFGVGLVEIPNLGCEEKDYASVPPRHNEKQIALIERGKCPFGDK SNLAGKFGFTAVVIYDNEPKSKEGLHGTLEPTKHTVATVGVVPYKVGKKLIANI ALNIDYSLYFAMDSYVEFIKTQNIADTKHGDPDNIVALGAHSDSVEEGPGINDD GSGTISLLNVAKQLTHFKINNKVRFWWAAEEEGLLGSNFYAYNLTKEENSKIR VFMDYDMMASPNYEYIYDANNKENPKGSEELKNLYVDYYKAHHLNLYTLVPF DGRSDYVGFINNGIPAGGIATGAENNVNNGKVLDRCYHQLCDDVSNLSWDA FITNTKLIAHSVATYADSFEGFPKRETQKHKEVDILNAQQPQFKYRADFLII
Research Area	Others
Source	E.coli
Target Names	APE3
Protein Names	Recommended name: Aminopeptidase Y EC= 3.4.11.15
Expression Region	57-537aa
Notes	Repeated freezing and thawing is not recommended. Store working aliquots at 4°C for up to one week.
Tag Info	N-terminal 10xHis-tagged and C-terminal Myc-tagged
Mol. Weight	58.9 kDa
Protein Length	Full Length of Mature Protein
Image	



(Tris-Glycine gel) Discontinuous SDS-PAGE (reduced) with 5% enrichment gel and 15% separation gel.



Based on the SEQUEST from database of E.coli host and target protein, the LC-MS/MS Analysis result of CSB-EP339800SVG could indicate that this peptide derived from E.coli-expressed *Saccharomyces cerevisiae* (strain ATCC 204508 / S288c) (Baker's yeast) APE3.



Based on the SEQUEST from database of E.coli host and target protein, the LC-MS/MS Analysis result of CSB-EP339800SVG could indicate that this peptide derived from E.coli-expressed *Saccharomyces cerevisiae* (strain ATCC 204508 / S288c) (Baker's yeast) APE3.

Reconstitution

We recommend that this vial be briefly centrifuged prior to opening to bring the contents to the bottom. Please reconstitute protein in deionized sterile water to a concentration of 0.1-1.0 mg/mL. We recommend to add 5-50% of glycerol (final concentration) and aliquot for long-term storage at -20°C/-80°C. Our default final concentration of glycerol is 50%. Customers could use it as reference.

Shelf Life

The shelf life is related to many factors, storage state, buffer ingredients, storage temperature and the stability of the protein itself. Generally, the shelf life of liquid form is 6 months at -20°C/-80°C. The shelf life of lyophilized form is 12 months at -20°C/-80°C.