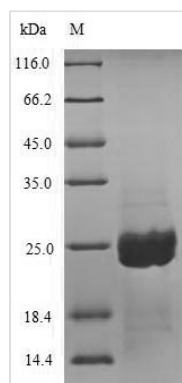




# Recombinant Aspergillus niger Aspergillopepsin-2?partial

<b>Product Code</b>	CSB-EP338616DOZ
<b>Abbreviation</b>	Recombinant Aspergillus niger Aspergillopepsin-2 protein, partial
<b>Storage</b>	The shelf life is related to many factors, storage state, buffer ingredients, storage temperature and the stability of the protein itself. Generally, the shelf life of liquid form is 6 months at -20°C/-80°C. The shelf life of lyophilized form is 12 months at -20°C/-80°C.
<b>Uniprot No.</b>	P24665
<b>Alias</b>	Acid protease A Aspergillopepsin II Proctase A
<b>Product Type</b>	Recombinant Protein
<b>Immunogen Species</b>	Aspergillus niger
<b>Purity</b>	Greater than 90% as determined by SDS-PAGE.
<b>Sequence</b>	EEYSSNWAGAVLIGDGYTKVTGEFTVPSVSAGSSGSSGY
<b>Research Area</b>	Microbiology
<b>Source</b>	E.coli
<b>Protein Names</b>	Recommended name: Aspergillopepsin-2 EC= 3.4.23.19 Alternative name(s): Acid protease A Aspergillopepsin II Proctase A Cleaved into the following 2 chains: 1. Aspergillopepsin-2 light chain Alternative name(s): Aspergillopep
<b>Expression Region</b>	60-98aa
<b>Notes</b>	Repeated freezing and thawing is not recommended. Store working aliquots at 4°C for up to one week.
<b>Tag Info</b>	N-terminal 6xHis-SUMO-tagged
<b>Mol. Weight</b>	19.9kDa
<b>Protein Length</b>	Partial

## Image



(Tris-Glycine gel) Discontinuous SDS-PAGE (reduced) with 5% enrichment gel and 15% separation gel.



## Description

Enhance your microbiology research with our recombinant *Aspergillus niger* Aspergillopepsin-2 protein, a partial protein covering the 60-98aa expression region. Aspergillopepsin-2 is an essential proteolytic enzyme with applications in both scientific and industrial settings. Produced in *E.coli*, this protein features an N-terminal 6xHis-SUMO tag for efficient purification and displays a purity greater than 90% as determined by SDS-PAGE. Supplied as a lyophilized powder, Aspergillopepsin-2 ensures ease of use and stability for your microbiology investigations.

## Reconstitution

We recommend that this vial be briefly centrifuged prior to opening to bring the contents to the bottom. Please reconstitute protein in deionized sterile water to a concentration of 0.1-1.0 mg/mL. We recommend to add 5-50% of glycerol (final concentration) and aliquot for long-term storage at -20°C/-80°C. Our default final concentration of glycerol is 50%. Customers could use it as reference.

## Shelf Life

The shelf life is related to many factors, storage state, buffer ingredients, storage temperature and the stability of the protein itself. Generally, the shelf life of liquid form is 6 months at -20°C/-80°C. The shelf life of lyophilized form is 12 months at -20°C/-80°C.