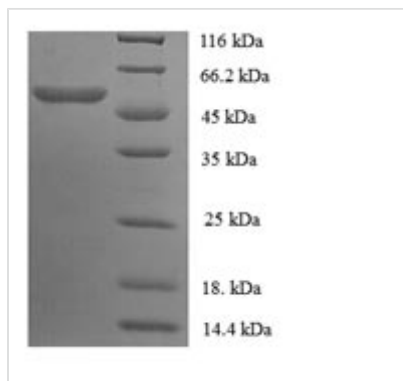




Recombinant Mouse Carboxylesterase 1C (Ces1c), partial

Product Code	CSB-EP338557MO
Relevance	Involved in the detoxification of xenobiotics and in the activation of ester and amide prodrugs. Involved in the Extracellular domain metabolism of lung surfactant.
Abbreviation	Recombinant Mouse Ces1c protein, partial
Storage	The shelf life is related to many factors, storage state, buffer ingredients, storage temperature and the stability of the protein itself. Generally, the shelf life of liquid form is 6 months at -20°C/-80°C. The shelf life of lyophilized form is 12 months at -20°C/-80°C.
Uniprot No.	P23953
Alias	Liver carboxylesterase NLung surfactant convertasePES-N
Product Type	Recombinant Protein
Immunogen Species	Mus musculus (Mouse)
Purity	Greater than 90% as determined by SDS-PAGE.
Sequence	<p> HSLPPVDDTTQGKVLGKYISLEGFEQPVAVFLGVPFAPKPLGSLRFAPPQPAE PWSFVKNATSYPPMCSQDAGWAKILSDMFSTEKEILPLKISEDCLYLNISPAD LTKSSQLPVMVWIHGGGLVIGGASPYNGLALSAHENVVVVTIQYRLGIWGLFST GDEHSPGNWAHL DQLAALRWVQDNIANFGGNPDSVTIFGESSGGISVSVLVL SPLGKDLFHRAISESGVVINTNVGKKNIQAVNEIIATLSQCNDTSSAAMVQCLR QKTESELLEISGKL VQYNISLSTMDGVVLPKAPPEILAEKSFNTVPYIVGFNKQE FGWIIPMMLQNL LPEGKMNEETASLLRRFHSELNISESMIPAVIEQYLRGVDD PAKKSELILDMFGDIFFGIPAVLLSRSLRDAGVSTYMYEFRYRPSFVSDKRPQT VEGDHGDEIFFVFGAPLLKEGASEEETNLSKMVMKFWANFARNGNPNGEGLP HWPEYDEQEGYLQIGATTQQAQRLKAEVAFWTELLAKNPETDPTEH </p>
Research Area	Others
Source	E.coli
Target Names	Ces1c
Expression Region	19-550aa
Notes	Repeated freezing and thawing is not recommended. Store working aliquots at 4°C for up to one week.
Tag Info	N-terminal GST-tagged
Mol. Weight	85.6kDa
Protein Length	Partial
Image	



(Tris-Glycine gel) Discontinuous SDS-PAGE (reduced) with 5% enrichment gel and 15% separation gel.

Reconstitution

We recommend that this vial be briefly centrifuged prior to opening to bring the contents to the bottom. Please reconstitute protein in deionized sterile water to a concentration of 0.1-1.0 mg/mL. We recommend to add 5-50% of glycerol (final concentration) and aliquot for long-term storage at -20°C/-80°C. Our default final concentration of glycerol is 50%. Customers could use it as reference.

Shelf Life

The shelf life is related to many factors, storage state, buffer ingredients, storage temperature and the stability of the protein itself. Generally, the shelf life of liquid form is 6 months at -20°C/-80°C. The shelf life of lyophilized form is 12 months at -20°C/-80°C.