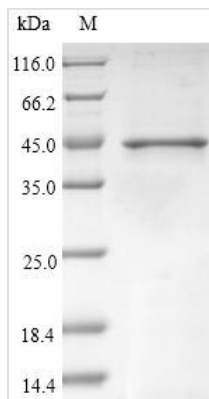




Recombinant Betula pendula Calcium-binding allergen Bet v 3 (BETVIII)

Product Code	CSB-EP337344BSS
Relevance	Could be involved in calcium metabolism in pollen. Binds 3 calcium ions.
Abbreviation	Recombinant Betula pendula BETVIII protein
Storage	The shelf life is related to many factors, storage state, buffer ingredients, storage temperature and the stability of the protein itself. Generally, the shelf life of liquid form is 6 months at -20°C/-80°C. The shelf life of lyophilized form is 12 months at -20°C/-80°C.
Uniprot No.	P43187
Alias	Allergen Bet v III Allergen: Bet v 3
Product Type	Recombinant Protein
Immunogen Species	Betula pendula (European white birch) (Betula verrucosa)
Purity	Greater than 90% as determined by SDS-PAGE.
Sequence	MPCSTEAMEKAGHGHASTPRKRSLSNSSFRLRSESLNTRLRLRRIFDLFDKNSD GIITVDELSRALNLLGLETDLSELESTVKSFTREGNIGLQFEDFISLHQSLNDSYF AYGGEDEDDNEEDMRKSILSQEEADSFGGFKVFEDEDGDGYISARELQMVLGK LGFSEGSEIDRVEKMIVSVDSNRDGRVDFFFEFKDMMRSVLVRSS
Research Area	others
Source	E.coli
Target Names	BETVIII
Protein Names	Recommended name: Calcium-binding allergen Bet v 3 Alternative name(s): Allergen Bet v III Allergen= Bet v 3
Expression Region	1-205aa
Notes	Repeated freezing and thawing is not recommended. Store working aliquots at 4°C for up to one week.
Tag Info	N-terminal 10xHis-SUMO-tagged and C-terminal Myc-tagged
Mol. Weight	43.1kDa
Protein Length	Full Length
Image	



(Tris-Glycine gel) Discontinuous SDS-PAGE (reduced) with 5% enrichment gel and 15% separation gel.

Description

In the general approach to express the recombinant *Betula pendula* (European white birch) BETVIII protein, a plasmid encoding the *Betula pendula* (European white birch) BETVIII protein (1-205aa) is first constructed. The constructed plasmid is then introduced into *e.coli* cells. Plasmid-containing *e.coli* cells are screened and cultured under conditions that induce the protein expression. The protein is fused with a N-terminal 10xHis-SUMO tag and C-terminal Myc tag. Lysing the cultured cells and purifying the resulting recombinant BETVIII protein through affinity purification. The SDS-PAGE analysis is conducted to confirm the presence of the recombinant BETVIII protein and assess its purity. Its purity is over 90%.

Reconstitution

We recommend that this vial be briefly centrifuged prior to opening to bring the contents to the bottom. Please reconstitute protein in deionized sterile water to a concentration of 0.1-1.0 mg/mL. We recommend to add 5-50% of glycerol (final concentration) and aliquot for long-term storage at -20°C/-80°C. Our default final concentration of glycerol is 50%. Customers could use it as reference.

Shelf Life

The shelf life is related to many factors, storage state, buffer ingredients, storage temperature and the stability of the protein itself. Generally, the shelf life of liquid form is 6 months at -20°C/-80°C. The shelf life of lyophilized form is 12 months at -20°C/-80°C.