



# Recombinant *Saccharomyces cerevisiae*

## Translation initiation factor IF-2, mitochondrial (IFM1)

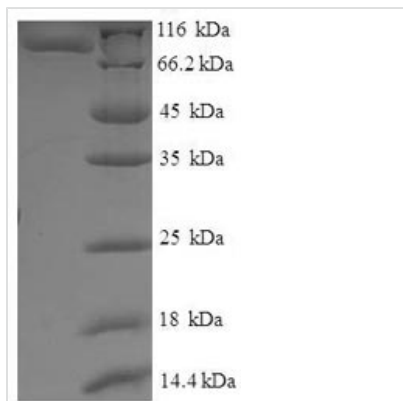
<b>Product Code</b>	CSB-EP335087SVG
<b>Relevance</b>	One of the essential components for the initiation of protein synthesis. Protects formylmethionyl-tRNA from spontaneous hydrolysis and promotes its binding to the 30S ribosomal subunits. Also involved in the hydrolysis of GTP during the formation of the 70S ribosomal complex.
<b>Abbreviation</b>	Recombinant <i>Saccharomyces cerevisiae</i> IFM1 protein
<b>Storage</b>	The shelf life is related to many factors, storage state, buffer ingredients, storage temperature and the stability of the protein itself. Generally, the shelf life of liquid form is 6 months at -20°C/-80°C. The shelf life of lyophilized form is 12 months at -20°C/-80°C.
<b>Uniprot No.</b>	P25038
<b>Product Type</b>	Recombinant Protein
<b>Immunogen Species</b>	<i>Saccharomyces cerevisiae</i> (strain ATCC 204508 / S288c) (Baker's yeast)
<b>Purity</b>	Greater than 90% as determined by SDS-PAGE.
<b>Sequence</b>	KGKRRNQISKKELKPLNFSIPNYISVNKLANLLNCRVERLIKDLTALGFENITTTYI LSKEYVELILQEYNFALPNLSTSTNLNDVYDELKSPVNPKLLTKRAPVVTIMGHV DHGKTTIIDYLRKSSVVAQEHGGITQHIGAFQITAPKSGKKITFLDTPGHAAFLK MRERGANITDIIVLVSVEDSLMPQTL EAIKHAKNSGNEMIIAITKIDRIPQPKERE KKIEKVINDLIVQGIPVEKIGGDVQVIPISAKTGENMDLLEESIVLLSEVMDIRAEN SPKTIAEGWIIESQVKKQVGNVATVLVKKGTLQKGKILICGNTFCKIKNLIDDKGI PILKATPSYATEVLGWKDVPHVGDEVIQVKSEAIKKFISKRQDLIEVQKNSSIV EKLNEERALAKEQHNLKELEHENTVQEHEQNTGPKLINYIIKCDVSGSAEAVSE SISSLGNDEVRCNVISSSVGIPTESDLKMAQITESTILCFNLGNLPSEVINNRAGI KIKQYNVIYKLIEDVTETLTENLKPIFEKKIVSTVDVRETDFRLKKKKIIRIAGCKVN NGVIKKNSLVQVVRGPNEDVIFDGKISTLKHNDKDDVAEVS KGHECGITFESGFE GFKPGDKILVYENVRVPRYL
<b>Research Area</b>	Others
<b>Source</b>	E.coli
<b>Target Names</b>	IFM1
<b>Expression Region</b>	43-676aa
<b>Notes</b>	Repeated freezing and thawing is not recommended. Store working aliquots at 4°C for up to one week.
<b>Tag Info</b>	N-terminal GST-tagged
<b>Mol. Weight</b>	97.5kDa



## Protein Length

## Full Length of Mature Protein

### Image



(Tris-Glycine gel) Discontinuous SDS-PAGE (reduced) with 5% enrichment gel and 15% separation gel.

### Reconstitution

We recommend that this vial be briefly centrifuged prior to opening to bring the contents to the bottom. Please reconstitute protein in deionized sterile water to a concentration of 0.1-1.0 mg/mL. We recommend to add 5-50% of glycerol (final concentration) and aliquot for long-term storage at -20°C/-80°C. Our default final concentration of glycerol is 50%. Customers could use it as reference.

### Shelf Life

The shelf life is related to many factors, storage state, buffer ingredients, storage temperature and the stability of the protein itself. Generally, the shelf life of liquid form is 6 months at -20°C/-80°C. The shelf life of lyophilized form is 12 months at -20°C/-80°C.