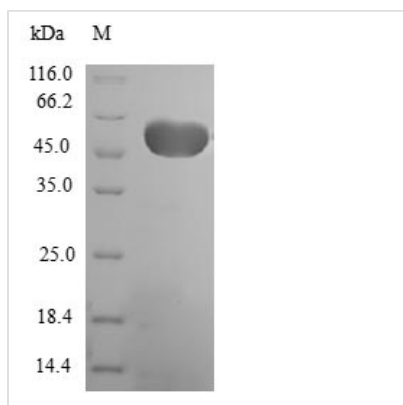




Recombinant Human Elongation factor 1-beta (EEF1B2)

Product Code	CSB-EP335050HU
Relevance	EF-1-beta and EF-1-delta stimulate the exchange of GDP bound to EF-1-alpha to GTP.
Abbreviation	Recombinant Human EEF1B2 protein
Storage	The shelf life is related to many factors, storage state, buffer ingredients, storage temperature and the stability of the protein itself. Generally, the shelf life of liquid form is 6 months at -20°C/-80°C. The shelf life of lyophilized form is 12 months at -20°C/-80°C.
Uniprot No.	P24534
Product Type	Recombinant Proteins
Immunogen Species	Homo sapiens (Human)
Purity	Greater than 90% as determined by SDS-PAGE.
Sequence	MGFGDLKSPAGLQVLNDYLADKSYIEGYVPSQADVAVFEAVSSPPPADLCHAL RWYNHIKSYEKEKASLPGVKKALGKYGPADVEDTTGSGATDSKDDDDIDLFGS DDEEESEEAkRLREERLAQYESKKAKKPALVAKSSILLDVKPWDDETDMAKLE ECVRSIQADGLVWGSSKLVPVGYGIKKLQIQCVVEDDKVGTDMLEEQITAFED YVQSM DVAAFNKI
Research Area	Epigenetics and Nuclear Signaling
Source	E.coli
Target Names	EEF1B2
Protein Names	Recommended name: Elongation factor 1-beta Short name= EF-1-beta
Expression Region	1-225aa
Notes	Repeated freezing and thawing is not recommended. Store working aliquots at 4°C for up to one week.
Tag Info	N-terminal GST-tagged
Mol. Weight	51.8kDa
Protein Length	Full Length
Image	



(Tris-Glycine gel) Discontinuous SDS-PAGE (reduced) with 5% enrichment gel and 15% separation gel.

Shelf Life

The shelf life is related to many factors, storage state, buffer ingredients, storage temperature and the stability of the protein itself. Generally, the shelf life of liquid form is 6 months at -20°C/-80°C. The shelf life of lyophilized form is 12 months at -20°C/-80°C.