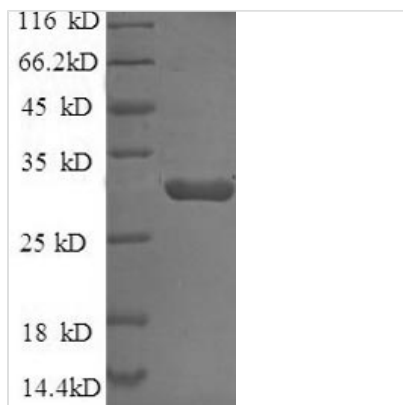


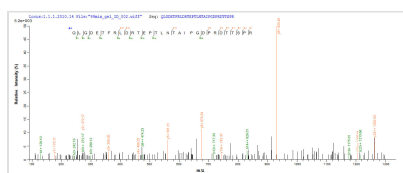


# Recombinant Escherichia coli Beta-lactamase CTX-M-1 (bla)

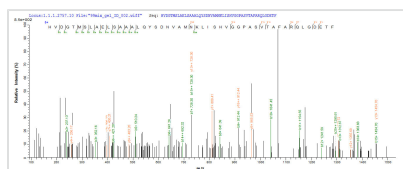
<b>Product Code</b>	CSB-EP333368ENL
<b>Relevance</b>	Broad spectrum beta-lactamase which confers resistance to penicillins, as well as first, second and third-generation cephalosporins.
<b>Abbreviation</b>	Recombinant E.coli bla protein
<b>Storage</b>	The shelf life is related to many factors, storage state, buffer ingredients, storage temperature and the stability of the protein itself. Generally, the shelf life of liquid form is 6 months at -20°C/-80°C. The shelf life of lyophilized form is 12 months at -20°C/-80°C.
<b>Uniprot No.</b>	P28585
<b>Alias</b>	Beta-lactamase MEN-1Cefotaximase 1
<b>Product Type</b>	Recombinant Protein
<b>Immunogen Species</b>	Escherichia coli
<b>Purity</b>	Greater than 90% as determined by SDS-PAGE.
<b>Sequence</b>	QTADVQQKLAELERQSGGRLGVALINTADNSQILYRADERFAMCSTSKVMAVA AVLKKSESEPNLLNQRVEIKKSDLVNYNPIAEKHVDGTMSLAELSAAALQYSDN VAMNKLISHVGGPASVTAFARQLGDETFRLDRTEPTLNTAIPGDPRDTTSPRA MAQTLRNLTGKALGDSQRAQLVTWMKGNTTGAASIQAGLPASWVVGDKTG SGDYGTTNDIAVIWPKDRAPLILVTYFTQPQPKAESRRDVLASAAKIVTNGL
<b>Research Area</b>	Others
<b>Source</b>	E.coli
<b>Target Names</b>	bla
<b>Protein Names</b>	Beta-lactamase MEN-1Cefotaximase 1
<b>Expression Region</b>	29-291aa
<b>Notes</b>	Repeated freezing and thawing is not recommended. Store working aliquots at 4°C for up to one week.
<b>Tag Info</b>	N-terminal 6xHis-tagged
<b>Mol. Weight</b>	32.2 kDa
<b>Protein Length</b>	Full Length of Mature Protein
<b>Image</b>	



(Tris-Glycine gel) Discontinuous SDS-PAGE (reduced) with 5% enrichment gel and 15% separation gel.



Based on the SEQUEST from database of E.coli host and target protein, the LC-MS/MS Analysis result of CSB-EP333368ENL could indicate that this peptide derived from E.coli-expressed Escherichia coli bla.



Based on the SEQUEST from database of E.coli host and target protein, the LC-MS/MS Analysis result of CSB-EP333368ENL could indicate that this peptide derived from E.coli-expressed Escherichia coli bla.

## Description

The recombinant Escherichia coli Beta-lactamase CTX-M-1 (bla) was produced as a fusion protein with N-terminal 6xHis tagged in E.coli. The encoding sequence contains 29-291aa of Escherichia coli bla protein. This full-length of mature bla protein reached up to 90% in purity, which is measured by SDS-PAGE. It migrated to a molecular mass band of 32 kDa on the gel. It was also validated by the LC-MS/MS analysis. In-stock bla proteins are offered now. This recombinant bla protein may find uses in the specific antibody synthesis or the studies of microbiology.

blaCTX-M-1 is the most frequently detected extended-spectrum  $\beta$ -lactamases (ESBL)-encoding gene. Its encoding protein is a broad spectrum beta-lactamase that confers resistance to penicillins, as well as first, second, and third-generation cephalosporins.

## Reconstitution

We recommend that this vial be briefly centrifuged prior to opening to bring the contents to the bottom. Please reconstitute protein in deionized sterile water to a concentration of 0.1-1.0 mg/mL. We recommend to add 5-50% of glycerol (final concentration) and aliquot for long-term storage at -20°C/-80°C. Our default final concentration of glycerol is 50%. Customers could use it as reference.

## Shelf Life

The shelf life is related to many factors, storage state, buffer ingredients, storage temperature and the stability of the protein itself.

Generally, the shelf life of liquid form is 6 months at -20°C/-80°C. The shelf life of lyophilized form is 12 months at -20°C/-80°C.