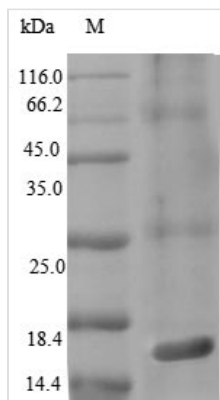




Recombinant Salmonella typhimurium Protein PrgJ (PrgJ)

Product Code	CSB-EP331347SXB
Relevance	Required for invasion of epithelial cells.
Abbreviation	Recombinant Salmonella typhimurium prgJ protein
Storage	The shelf life is related to many factors, storage state, buffer ingredients, storage temperature and the stability of the protein itself. Generally, the shelf life of liquid form is 6 months at -20°C/-80°C. The shelf life of lyophilized form is 12 months at -20°C/-80°C.
Uniprot No.	P41785
Product Type	Recombinant Protein
Immunogen Species	Salmonella typhimurium (strain LT2 / SGSC1412 / ATCC 700720)
Purity	Greater than 90% as determined by SDS-PAGE.
Sequence	MSIATIVPENAVIGQAVNIRSMETDIVSLDDRLLQAFSGSAIATAVDKQTITNRIE DPNLVTDPKELAISQEMISDYNLYVSMVSTLTRKGVGAVETLLRS
Research Area	Others
Source	E.coli
Target Names	prgJ
Protein Names	Recommended name: Protein prgJ
Expression Region	1-101aa
Notes	Repeated freezing and thawing is not recommended. Store working aliquots at 4°C for up to one week.
Tag Info	N-terminal 10xHis-tagged and C-terminal Myc-tagged
Mol. Weight	15.9kDa
Protein Length	Full Length

Image



(Tris-Glycine gel) Discontinuous SDS-PAGE (reduced) with 5% enrichment gel and 15% separation gel.



Description

The construction of a plasmid coding for the Salmonella typhimurium (strain LT2 / SGSC1412 / ATCC 700720) prgJ protein (1-101aa) is the initial step for the preparation of the recombinant Salmonella typhimurium (strain LT2 / SGSC1412 / ATCC 700720) prgJ protein. The next is to transform the constructed plasmid into e.coli cells. e.coli cells containing the plasmid are screened and then cultured under conditions that promote the expression of the gene of interest. The protein is equipped with a N-terminal 10xHis tag and C-terminal Myc tag. After that, affinity purification is used to isolate and purify the recombinant prgJ protein from the cell lysate. Finally, the resulting recombinant prgJ protein undergoes SDS-PAGE analysis, demonstrating a purity greater than 90%.

Reconstitution

We recommend that this vial be briefly centrifuged prior to opening to bring the contents to the bottom. Please reconstitute protein in deionized sterile water to a concentration of 0.1-1.0 mg/mL. We recommend to add 5-50% of glycerol (final concentration) and aliquot for long-term storage at -20°C/-80°C. Our default final concentration of glycerol is 50%. Customers could use it as reference.

Shelf Life

The shelf life is related to many factors, storage state, buffer ingredients, storage temperature and the stability of the protein itself. Generally, the shelf life of liquid form is 6 months at -20°C/-80°C. The shelf life of lyophilized form is 12 months at -20°C/-80°C.