

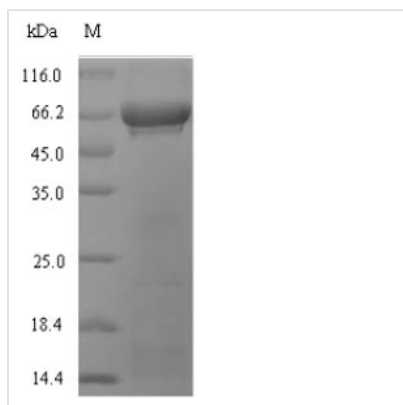


Recombinant Glycine max Ribulose biphosphate carboxylase large chain (rbcL)

Product Code	CSB-EP328678GGV
Relevance	RuBisCO catalyzes two reactions: the carboxylation of D-ribulose 1,5-bisphosphate, the primary event in carbon dioxide fixation, as well as the oxidative fragmentation of the pentose substrate in the photorespiration process. Both reactions occur simultaneously and in competition at the same active site.
Abbreviation	Recombinant Glycine max rbcL protein
Storage	The shelf life is related to many factors, storage state, buffer ingredients, storage temperature and the stability of the protein itself. Generally, the shelf life of liquid form is 6 months at -20°C/-80°C. The shelf life of lyophilized form is 12 months at -20°C/-80°C.
Uniprot No.	P27066
Alias	RuBisCO large subunit
Product Type	Recombinant Protein
Immunogen Species	Glycine max (Soybean) (Glycine hispida)
Purity	Greater than 90% as determined by SDS-PAGE.
Sequence	PQTETKASVGFKAGVKDYKLTYYTPDYETKDTDILAAFRVTPQPGVPPEEAGA AVAAESSTGTWTTVWTDGLTSLDRYKGRCYGLEPVAGEENQYIAYVAYPLDL FEEGSVTNMFTSIVGNVFGFKALRALRLEDLRIPTAYIKTFQGPPHGIQVERDKL NKYGRPLLGCTIKPKLGLSAKNYGRAVYECLRGGLDFTKDDENVNSQPFMRW RDRFLFCAEAIFKSQAETGEIKGHYLNATAGTCEEMMKRAVFARELGVPIVMH DYLTGGFTANTSLAHYCRDNGLLLHIHRAMHAVIDRQKNHGMHFRVLAKALRL SGGDHVHAGTVVGKLEGEREITLGFVDLLRDDFVEKDRSRGIYFTQDWVSLP GVLPVASGGIHVWHMPALTEIFGDDSVLQFGGGTLGHPWGNAPGAVANRVAL EACVQARNEGRDLAREGNEIIREASKWSPELAAACEVWKEIKFEFEAMDTL
Research Area	Signal Transduction
Source	E.coli
Target Names	rbcL
Protein Names	Recommended name: Ribulose biphosphate carboxylase large chain Short name= RuBisCO large subunit EC= 4.1.1.39
Expression Region	3-475aa
Notes	Repeated freezing and thawing is not recommended. Store working aliquots at 4°C for up to one week.
Tag Info	N-terminal 6xHis-SUMO-tagged
Mol. Weight	68.4kDa
Protein Length	Full Length of Mature Protein



Image



(Tris-Glycine gel) Discontinuous SDS-PAGE (reduced) with 5% enrichment gel and 15% separation gel.

Reconstitution

We recommend that this vial be briefly centrifuged prior to opening to bring the contents to the bottom. Please reconstitute protein in deionized sterile water to a concentration of 0.1-1.0 mg/mL. We recommend to add 5-50% of glycerol (final concentration) and aliquot for long-term storage at -20°C/-80°C. Our default final concentration of glycerol is 50%. Customers could use it as reference.

Shelf Life

The shelf life is related to many factors, storage state, buffer ingredients, storage temperature and the stability of the protein itself. Generally, the shelf life of liquid form is 6 months at -20°C/-80°C. The shelf life of lyophilized form is 12 months at -20°C/-80°C.