

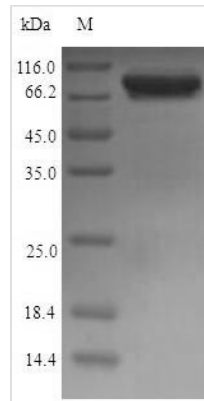


# Recombinant Escherichia coli Malate synthase G (glcB)

<b>Product Code</b>	CSB-EP327661ENV
<b>Relevance</b>	Involved in the glycolate utilization. Catalyzes the condensation and subsequent hydrolysis of acetyl-coenzyme A (acetyl-CoA) and glyoxylate to form malate and CoA.
<b>Abbreviation</b>	Recombinant E.coli glcB protein
<b>Storage</b>	The shelf life is related to many factors, storage state, buffer ingredients, storage temperature and the stability of the protein itself. Generally, the shelf life of liquid form is 6 months at -20°C/-80°C. The shelf life of lyophilized form is 12 months at -20°C/-80°C.
<b>Uniprot No.</b>	P37330
<b>Alias</b>	Short name:MSG
<b>Product Type</b>	Recombinant Protein
<b>Immunogen Species</b>	Escherichia coli (strain K12)
<b>Purity</b>	Greater than 90% as determined by SDS-PAGE.
<b>Sequence</b>	SQTITQSRLRIDANFKRFVDEEVLPGTGLDAAAFWRNFDEIVHDLAPENRQLLA ERDRIQAALDEWHRSNPGPVKDKAAYKSFLRELGYLVPQPERVTVETTIDSE ITSQAGPQLVVPAMNARYALNAANARWGSLYDALYGSDIIPQEGAMVSGYDP QRGEQVIAWVRRFLDESLPLENGSYQDVVAFKVVDKQLRIQLKNGKETTLRTP AQFVG YRGDAAAPTCILLKNNGHLIELQIDANGRIGKDDPAHINDVIVEAAISTIL DCEDSVA AVDAEDKILLYRNLLGLMQGTLQE KMEKNGRQIVRKLND DRHYTAA DGSEISLHGRSLLFIRNVGHLMTIPVIWDSEGNEIPEGILDGVM TGAIALYDLKV QKNSRTGSVYIVKPKMHGPQE VAFANKLFTRIETMLGMAPNTLKM GIMDEERR TSLNLRSCIAQARNRVAFINTGFLDRTGDEMHSVMEAGPMLRKNQMKSTPWI KAYERNNVLSGLFCGLRGKAQIGKGMWAMPDLMADMY SQKGDQLRAGANTA WVPSP TAATLHALHYHQTNVQSVQANIAQTEFNAEFELLDLLTIPVAENAN WSAQEIQQELDNNVQGILGYVVRWVEQGIGCSKVPDIHNVALMEDRATLRIS QHIANWLRHGILTKEQVQASLENMAKVVDQQNAGDPAYRPMAGNFANSCAFK AASDLIFLG VKQPNGYTEPLLHAWRLREKESH
<b>Research Area</b>	Microbiology
<b>Source</b>	E.coli
<b>Target Names</b>	glcB
<b>Protein Names</b>	Recommended name: Malate synthase G Short name= MSG EC= 2.3.3.9
<b>Expression Region</b>	2-723aa
<b>Notes</b>	Repeated freezing and thawing is not recommended. Store working aliquots at 4°C for up to one week.
<b>Tag Info</b>	N-terminal 6xHis-tagged



<b>Mol. Weight</b>	84.4kDa
<b>Protein Length</b>	Full Length of Mature Protein

**Image**


(Tris-Glycine gel) Discontinuous SDS-PAGE (reduced) with 5% enrichment gel and 15% separation gel.

<b>Reconstitution</b>	We recommend that this vial be briefly centrifuged prior to opening to bring the contents to the bottom. Please reconstitute protein in deionized sterile water to a concentration of 0.1-1.0 mg/mL. We recommend to add 5-50% of glycerol (final concentration) and aliquot for long-term storage at -20°C/-80°C. Our default final concentration of glycerol is 50%. Customers could use it as reference.
-----------------------	---

<b>Shelf Life</b>	The shelf life is related to many factors, storage state, buffer ingredients, storage temperature and the stability of the protein itself. Generally, the shelf life of liquid form is 6 months at -20°C/-80°C. The shelf life of lyophilized form is 12 months at -20°C/-80°C.
-------------------	---