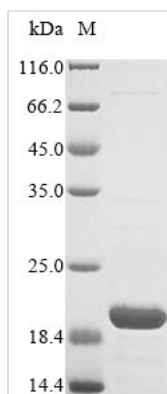




Recombinant Escherichia coli Relaxosome protein TraY (traY)

Product Code	CSB-EP327259ENL
Relevance	Conjugative DNA transfer (CDT) is the unidirectional transfer of ssDNA plasmid from a donor to a recipient cell. It is the central mechanism by which antibiotic resistance and virulence factors are propagated in bacterial populations. Part of the relaxosome, which facilitates a site- and strand-specific cut in the origin of transfer by Tral, at the nic site. Relaxosome formation requires binding of IHF and TraY to the oriT region, which then facilitates binding of Tral. Also positively regulates tra gene expression
Abbreviation	Recombinant E.coli traY protein
Storage	The shelf life is related to many factors, storage state, buffer ingredients, storage temperature and the stability of the protein itself. Generally, the shelf life of liquid form is 6 months at -20°C/-80°C. The shelf life of lyophilized form is 12 months at -20°C/-80°C.
Uniprot No.	P33789
Product Type	Recombinant Protein
Immunogen Species	Escherichia coli
Purity	Greater than 85% as determined by SDS-PAGE.
Sequence	MKEPKSNIRKLIDIGGLIGR
Research Area	Others
Source	E.coli
Target Names	traY
Protein Names	Recommended name: Relaxosome protein TraY
Expression Region	1-20aa
Notes	Repeated freezing and thawing is not recommended. Store working aliquots at 4°C for up to one week.
Tag Info	N-terminal 6xHis-SUMO-tagged
Mol. Weight	18.2 kDa
Protein Length	Full Length
Image	



(Tris-Glycine gel) Discontinuous SDS-PAGE (reduced) with 5% enrichment gel and 15% separation gel.

Reconstitution

We recommend that this vial be briefly centrifuged prior to opening to bring the contents to the bottom. Please reconstitute protein in deionized sterile water to a concentration of 0.1-1.0 mg/mL. We recommend to add 5-50% of glycerol (final concentration) and aliquot for long-term storage at -20°C/-80°C. Our default final concentration of glycerol is 50%. Customers could use it as reference.

Shelf Life

The shelf life is related to many factors, storage state, buffer ingredients, storage temperature and the stability of the protein itself. Generally, the shelf life of liquid form is 6 months at -20°C/-80°C. The shelf life of lyophilized form is 12 months at -20°C/-80°C.