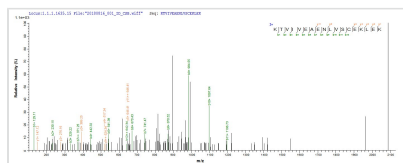




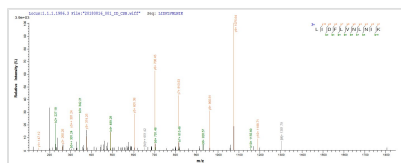
Recombinant Clostridium acetobutylicum Butyrate-acetoacetate CoA-transferase subunit A (ctfA)

Product Code	CSB-EP327254DUB
Abbreviation	Recombinant Clostridium acetobutylicum ctfA protein
Storage	The shelf life is related to many factors, storage state, buffer ingredients, storage temperature and the stability of the protein itself. Generally, the shelf life of liquid form is 6 months at -20°C/-80°C. The shelf life of lyophilized form is 12 months at -20°C/-80°C.
Uniprot No.	P33752
Product Type	Recombinant Protein
Immunogen Species	Clostridium acetobutylicum (strain ATCC 824 / DSM 792 / JCM 1419 / LMG 5710 / VKM B-1787)
Purity	Greater than 85% as determined by SDS-PAGE.
Sequence	MNSKIIRFENLRSFFKDGMTIMIGGFLNCGTPTKLIDFLVNLNIKNLTIISNDTCYP NTGIGKLISNNQVKKLIASYIGSNPDTGKKLFNNELEVELSPQGTLVERIRAGGS GLGGVLTKTGLGTLEKGGKKISINGTEYLLELPLTADVALIKGSIVDEAGNTFYK GTTKNFNPYMAMAAKTIVIEAENLVSCLEKEKAMTPGVLINIVKEPA
Research Area	Others
Source	E.coli
Target Names	ctfA
Protein Names	Recommended name: Butyrate--acetoacetate CoA-transferase subunit A Short name= Coat A EC= 2.8.3.9 Alternative name(s): Acetoacetyl-CoA:acetate/butyrate:CoA transferase subunit A
Expression Region	1-218aa
Notes	Repeated freezing and thawing is not recommended. Store working aliquots at 4°C for up to one week.
Tag Info	N-terminal 10xHis-tagged and C-terminal Myc-tagged
Mol. Weight	30.6 kDa
Protein Length	Full Length

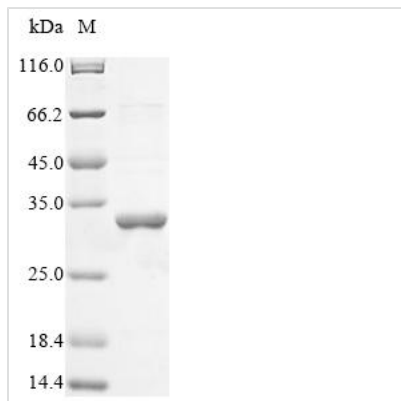
Image



Based on the SEQUEST from database of E.coli host and target protein, the LC-MS/MS Analysis result of CSB-EP327254DUB could indicate that this peptide derived from E.coli-expressed Clostridium acetobutylicum (strain ATCC 824 / DSM 792 / JCM 1419 / LMG 5710 / VKM B-1787) ctfA.



Based on the SEQUEST from database of E.coli host and target protein, the LC-MS/MS Analysis result of CSB-EP327254DUB could indicate that this peptide derived from E.coli-expressed *Clostridium acetobutylicum* (strain ATCC 824 / DSM 792 / JCM 1419 / LMG 5710 / VKM B-1787) ctfA.



(Tris-Glycine gel) Discontinuous SDS-PAGE (reduced) with 5% enrichment gel and 15% separation gel.

Reconstitution

We recommend that this vial be briefly centrifuged prior to opening to bring the contents to the bottom. Please reconstitute protein in deionized sterile water to a concentration of 0.1-1.0 mg/mL. We recommend to add 5-50% of glycerol (final concentration) and aliquot for long-term storage at -20°C/-80°C. Our default final concentration of glycerol is 50%. Customers could use it as reference.

Shelf Life

The shelf life is related to many factors, storage state, buffer ingredients, storage temperature and the stability of the protein itself. Generally, the shelf life of liquid form is 6 months at -20°C/-80°C. The shelf life of lyophilized form is 12 months at -20°C/-80°C.