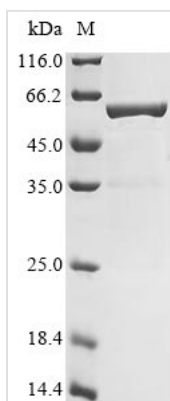




# Recombinant *Thermus aquaticus* DNA polymerase I, thermostable (polA) (I614N,L616I), partial

<b>Product Code</b>	CSB-EP323156TNN1(M1)
<b>Abbreviation</b>	Recombinant <i>Thermus aquaticus</i> polA protein (I614N,L616I), partial
<b>Storage</b>	The shelf life is related to many factors, storage state, buffer ingredients, storage temperature and the stability of the protein itself. Generally, the shelf life of liquid form is 6 months at -20°C/-80°C. The shelf life of lyophilized form is 12 months at -20°C/-80°C.
<b>Uniprot No.</b>	P19821
<b>Form</b>	Liquid or Lyophilized powder
<b>Storage Buffer</b>	If the delivery form is liquid, the default storage buffer is Tris/PBS-based buffer, 5%-50% glycerol. If the delivery form is lyophilized powder, the buffer before lyophilization is Tris/PBS-based buffer, 6% Trehalose.
<b>Product Type</b>	Recombinant Protein
<b>Immunogen Species</b>	<i>Thermus aquaticus</i>
<b>Purity</b>	Greater than 85% as determined by SDS-PAGE.
<b>Sequence</b>	<p>ALEEAPWPPPEGAFVGVLSRKEPMWADLLALAAARGGRVHRAPEPYKALRD  LKEARGLLAKDLSVLALREGLGLPPGDDPMLLAYLLDPSNTTPEGVARRYGGE  WTEEAGERAALSERLFANLWGRLEGEERLLWLYREVERPLSAVLAHMEATGV  RLDVAYLRALSLEVAEEIARLEAEVFRLAGHPFNLNSRDQLERVLFDLGLPAI  GKTEKTGKRSTSAAVLEALREAHPIVEKILQYRELTKLKSTYIDPLPDLIHPRTG  RLHTRFNQTATATGRLSSSDPNLQNIPTVPLGQIRRAFIAEEGWLLVALDYS  QNEIRVLAHLSGDENLIRVFQEGRDIHTETASWMFGVPREAVDPLMRRAAKTI  NFGVLYGMSAHRLSQELAIPEYEEAQAFIERFQSFQKVRWIEKTLEEGRRRG  YVETLFGRRRYVPDLEARVKSVREAAERMAFNMPVQGTAAADLMKLMVKLFP  RLEEMGARMMLLQVHDELVLLEAPKERAEAVARLAKEVMEGVYPLAVPLEVEVGI  GEDWLSAKE</p>
<b>Research Area</b>	Epigenetics and Nuclear Signaling
<b>Source</b>	<i>E.coli</i>
<b>Target Names</b>	polA
<b>Expression Region</b>	293-832aa(I614,L616I)
<b>Notes</b>	Repeated freezing and thawing is not recommended. Store working aliquots at 4°C for up to one week.
<b>Tag Info</b>	Tag-Free
<b>Mol. Weight</b>	61.0 kDa
<b>Protein Length</b>	Partial
<b>Image</b>	



(Tris-Glycine gel) Discontinuous SDS-PAGE (reduced) with 5% enrichment gel and 15% separation gel.

### Reconstitution

We recommend that this vial be briefly centrifuged prior to opening to bring the contents to the bottom. Please reconstitute protein in deionized sterile water to a concentration of 0.1-1.0 mg/mL. We recommend to add 5-50% of glycerol (final concentration) and aliquot for long-term storage at -20°C/-80°C. Our default final concentration of glycerol is 50%. Customers could use it as reference.

### Shelf Life

The shelf life is related to many factors, storage state, buffer ingredients, storage temperature and the stability of the protein itself. Generally, the shelf life of liquid form is 6 months at -20°C/-80°C. The shelf life of lyophilized form is 12 months at -20°C/-80°C.