

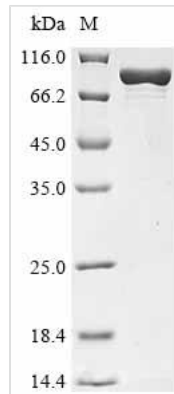


# Recombinant Escherichia coli DNA polymerase II (polB)

<b>Product Code</b>	CSB-EP321908ENV
<b>Abbreviation</b>	Recombinant E.coli polB protein
<b>Storage</b>	The shelf life is related to many factors, storage state, buffer ingredients, storage temperature and the stability of the protein itself. Generally, the shelf life of liquid form is 6 months at -20°C/-80°C. The shelf life of lyophilized form is 12 months at -20°C/-80°C.
<b>Uniprot No.</b>	P21189
<b>Form</b>	Liquid or Lyophilized powder
<b>Storage Buffer</b>	If the delivery form is liquid, the default storage buffer is Tris/PBS-based buffer, 5%-50% glycerol. If the delivery form is lyophilized powder, the buffer before lyophilization is Tris/PBS-based buffer, 6% Trehalose.
<b>Product Type</b>	Recombinant Escherichia coli DNA polymerase II(polB)
<b>Immunogen Species</b>	Escherichia coli (strain K12)
<b>Purity</b>	Greater than 90% as determined by SDS-PAGE.
<b>Sequence</b>	AQAGFILTRHWRDTPQGTEVSFWLATDNGPLQVTLAPQESVAFIPADQVPRA QHILQGEQGFRLTPLALKDFHRQPVYGLYCRAHRQLMNYEKRLREGGVTVYE ADVRPPERYLMERFITSPVWVEGDMHNGTIVNARLKPHPDYRPPPLKWVSDIE TTRHGELYCIGLEGCGQRIVYMLGPENGDASSLDFELEYVASRPQLEKLN FANYDPDVIIGWNVVQFDLRMLQKHAERYRLPLRLGRDNSELEWREHGFKN VFFAQAKGRLIIDGIEALSAFWNFSSFSLETVAQELLGEGKSIDNPWDRMDEI DRRFAEDKPALATYNLKDCELVTFQIFHKTEIMPFLERATVNGLPVDRHGG SVAFGHLYFPRMHRAGYVAPNLGEVPPHASPGGYVMDSRPGLYDSVLVLDYKSL YPSIIRTFIDPVGLVEGMAQPDPEHSTEGFLDAWFSREKHCLPEIVTNIWHGR DEAKRQGNKPLSQALKIIMNAFYGVLTGTACRFFDPRLASSITMRGHQIMRQT KALIEAQGYDVIYGDSTDSTFVWLKGAHSEEEAAKIGRALVQHVNAWWAETLQK QRLTSALELEYETHFCRFLMPTIRGADTGSKKRYAGLIQEGDKQRMVFKGLET VRTDWTPLAQFQQELYLRIFRNEPYQEYVRETIDKLMAGELDARLVYRKRLR RPLSEYQRNVPPHVRAARLADEENQKRGRPLQYQNRGTIKYVWTTNGPEPLD YQRSPLDYEHYLTRQLQPVAEGILPFIEDNFATLMTGQLGLF
<b>Research Area</b>	Others
<b>Source</b>	E.coli
<b>Target Names</b>	polB
<b>Expression Region</b>	2-783aa
<b>Notes</b>	Repeated freezing and thawing is not recommended. Store working aliquots at 4°C for up to one week.
<b>Tag Info</b>	N-terminal 10xHis-tagged and C-terminal Myc-tagged



<b>Mol. Weight</b>	97.4 kDa
<b>Protein Length</b>	Full Length of Mature Protein

**Image**


(Tris-Glycine gel) Discontinuous SDS-PAGE (reduced) with 5% enrichment gel and 15% separation gel.

**Description**

Achieving the recombinant Escherichia coli (strain K12) polB protein production entails controlling the expression of the desired gene in e.coli cells. The sequence (2-783aa) of foreign DNA is integrated into an expression vector and then transferred to e.coli cells. Selected positive cells are cultured to induce the expression of the desired protein. The protein carries a N-terminal 10xHis tag and C-terminal Myc tag. The recombinant Escherichia coli (strain K12) polB protein is purified through affinity purification, exhibiting a purity greater than 90%, as determined by SDS-PAGE.

**Reconstitution**

We recommend that this vial be briefly centrifuged prior to opening to bring the contents to the bottom. Please reconstitute protein in deionized sterile water to a concentration of 0.1-1.0 mg/mL. We recommend to add 5-50% of glycerol (final concentration) and aliquot for long-term storage at -20°C/-80°C. Our default final concentration of glycerol is 50%. Customers could use it as reference.

**Shelf Life**

The shelf life is related to many factors, storage state, buffer ingredients, storage temperature and the stability of the protein itself. Generally, the shelf life of liquid form is 6 months at -20°C/-80°C. The shelf life of lyophilized form is 12 months at -20°C/-80°C.