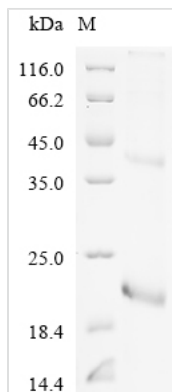




Recombinant Rat Phospholipase A2, membrane associated (Pla2g2a)

Product Code	CSB-EP321246RAa0
Abbreviation	Recombinant Rat Pla2g2a protein
Storage	The shelf life is related to many factors, storage state, buffer ingredients, storage temperature and the stability of the protein itself. Generally, the shelf life of liquid form is 6 months at -20°C/-80°C. The shelf life of lyophilized form is 12 months at -20°C/-80°C.
Uniprot No.	P14423
Form	Liquid or Lyophilized powder
Storage Buffer	If the delivery form is liquid, the default storage buffer is Tris/PBS-based buffer, 5%-50% glycerol. If the delivery form is lyophilized powder, the buffer before lyophilization is Tris/PBS-based buffer, 6% Trehalose.
Product Type	Recombinant Protein
Immunogen Species	Rattus norvegicus (Rat)
Purity	Greater than 90% as determined by SDS-PAGE.
Sequence	SLLEFGQMILFKTGKRADVSYGFYGCCHCGVGGRGSPKDATDWCCVTHDCCY NRLEKRGCGTKFLTYKFSYRGGQISCSTNQDSCRKQLCQCDKAAAECFARNK KSYSLKYQFYPNKFCKGKTPSC
Research Area	Others
Source	E.coli
Target Names	Pla2g2a
Expression Region	22-146aa
Notes	Repeated freezing and thawing is not recommended. Store working aliquots at 4°C for up to one week.
Tag Info	N-terminal 6xHis-tagged
Mol. Weight	20.0 kDa
Protein Length	Full Length of Mature Protein
Image	



(Tris-Glycine gel) Discontinuous SDS-PAGE (reduced) with 5% enrichment gel and 15% separation gel.

Description

To express the recombinant rat phospholipase A2, membrane associated (Pla2g2a) in *E. coli*, the gene fragment encoding the full-length mature rat Pla2g2a protein (amino acids 22-146) and an N-terminal 6xHis-tag is cloned into a suitable expression vector. The cloning process involves ligating the gene fragment into the vector downstream of the appropriate promoter and regulatory elements. The resulting expression construct is then transformed into *E. coli* host cells using a transformation method. The transformed cells are selected to ensure the presence of the recombinant plasmid. Subsequently, a large-scale culture of the transformed *E. coli* cells is established in a growth medium under optimal conditions for protein expression. The N-terminal 6xHis-tag allows for convenient purification and detection of the recombinant Pla2g2a protein. The recombinant Pla2g2a protein can be extracted and purified from the cell lysate. The purity of the recombinant human Pla2g2a protein is assessed through SDS-PAGE analysis, reaching up to 90%. It presents as a band of 64 molecular weight on the gel.

Reconstitution

We recommend that this vial be briefly centrifuged prior to opening to bring the contents to the bottom. Please reconstitute protein in deionized sterile water to a concentration of 0.1-1.0 mg/mL. We recommend to add 5-50% of glycerol (final concentration) and aliquot for long-term storage at -20°C/-80°C. Our default final concentration of glycerol is 50%. Customers could use it as reference.

Shelf Life

The shelf life is related to many factors, storage state, buffer ingredients, storage temperature and the stability of the protein itself. Generally, the shelf life of liquid form is 6 months at -20°C/-80°C. The shelf life of lyophilized form is 12 months at -20°C/-80°C.