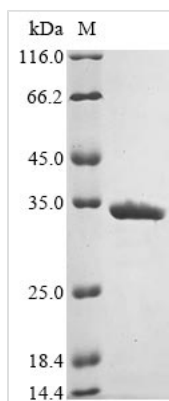




Recombinant Escherichia coli F41 fimbrial protein (FimF41a)

Product Code	CSB-EP320917ENL
Abbreviation	Recombinant E.coli FimF41a protein
Storage	The shelf life is related to many factors, storage state, buffer ingredients, storage temperature and the stability of the protein itself. Generally, the shelf life of liquid form is 6 months at -20°C/-80°C. The shelf life of lyophilized form is 12 months at -20°C/-80°C.
Uniprot No.	P11900
Form	Liquid or Lyophilized powder
Storage Buffer	If the delivery form is liquid, the default storage buffer is Tris/PBS-based buffer, 5%-50% glycerol. If the delivery form is lyophilized powder, the buffer before lyophilization is Tris/PBS-based buffer, 6% Trehalose.
Product Type	Recombinant Protein
Immunogen Species	Escherichia coli
Purity	Greater than 90% as determined by SDS-PAGE.
Sequence	ADWTEGQPGDIIIGGEITSPSVKWLWKTGEGLSFSNTTNEIVKRKLNISVPTD ELFLAAKMSDGIKGVFVGNTLIPKIEMASYDGSVITPSFTSNTAMDIKVKVKNNG DNTELGTLSVPLSFGAAVATIFDGDTTDSAVAHIIGGSAGTVFEGLVNPGRFTD QNIAYKWNGLSKAEMAGYVEKLMPGQSASTSYSGFHNWDDLSHSNYTSANK ASYLSYSGSVSAGSTLVMNLNKDVAGRLEWVAPVTITVIYS
Research Area	Microbiology
Source	E.coli
Target Names	FimF41a
Expression Region	23-277aa
Notes	Repeated freezing and thawing is not recommended. Store working aliquots at 4°C for up to one week.
Tag Info	N-terminal 10xHis-tagged and C-terminal Myc-tagged
Mol. Weight	34.4 kDa
Protein Length	Full Length of Mature Protein
Image	



(Tris-Glycine gel) Discontinuous SDS-PAGE (reduced) with 5% enrichment gel and 15% separation gel.

Description

Upon evaluation of different signal peptides for the secretory production of recombinant bovine pancreatic ribonuclease A in Gram-negative bacterial systems [1], found that FimF41a, along with other signal peptides such as Phage shock protein E (pspE), pectate lyase B (PelB), and Lipopolysaccharide export system protein lptA, were identified as the best signal peptides for expressing RNase A protein in E. coli [1]. This suggests that FimF41a may play a crucial role in the secretory pathway and could be involved in the translocation of proteins across the bacterial membrane.

References:

[1] A. Forouharmehr, M. Nassiri, S. Ghowvati, & A. Javadmanesh, "Evaluation of different signal peptides for secretory production of recombinant bovine pancreatic ribonuclease a in gram negative bacterial system: an in silico study", Current Proteomics, vol. 15, no. 1, 2018.

<https://doi.org/10.2174/1570164614666170725144424>

Reconstitution

We recommend that this vial be briefly centrifuged prior to opening to bring the contents to the bottom. Please reconstitute protein in deionized sterile water to a concentration of 0.1-1.0 mg/mL. We recommend to add 5-50% of glycerol (final concentration) and aliquot for long-term storage at -20°C/-80°C. Our default final concentration of glycerol is 50%. Customers could use it as reference.

Shelf Life

The shelf life is related to many factors, storage state, buffer ingredients, storage temperature and the stability of the protein itself. Generally, the shelf life of liquid form is 6 months at -20°C/-80°C. The shelf life of lyophilized form is 12 months at -20°C/-80°C.