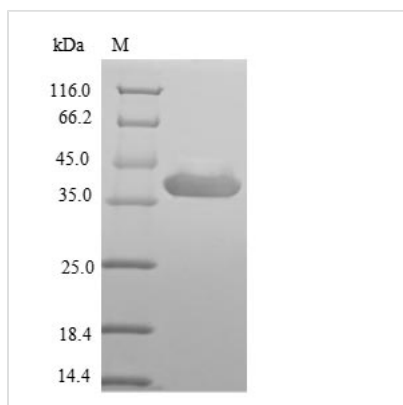




Recombinant Rotavirus A Outer capsid protein VP4, partial, E.coli

Product Code	CSB-EP320838ROH
Relevance	Spike-forming protein that mediates virion attachment to the host epithelial cell receptors and plays a major role in cell penetration, determination of host range restriction and virulence. Rotavirus entry into the host cell probably involves multiple sequential contacts between the outer capsid proteins VP4 and VP7, and the cell receptors. According to the considered strain, VP4 ses to essentially target sialic acid and/or the integrin heterodimer ITGA2/ITGB1 .Outer capsid protein VP5*: forms the spike
Abbreviation	Recombinant Rotavirus A Outer capsid protein VP4 protein, partial
Storage	The shelf life is related to many factors, storage state, buffer ingredients, storage temperature and the stability of the protein itself. Generally, the shelf life of liquid form is 6 months at -20°C/-80°C. The shelf life of lyophilized form is 12 months at -20°C/-80°C.
Uniprot No.	P11200
Product Type	Recombinant Protein
Immunogen Species	Rotavirus A (strain RVA/Human/United Kingdom/ST3/1975/G4P2A[6]) (RV-A) (Rotavirus A (strain St. Thomas 3))
Purity	Greater than 90% as determined by SDS-PAGE.
Sequence	AQVSEDIISKTS LWKEMQYNRDIIRFKFNNSIIKLGGLGYKWSEISFKAANYQY NYLRDGEQVTAHTTCSVNGVN NFSYNGG L L PTHFSISRYEVIKENS YVYVDYW DDSQA FRNMVYVRSLAANLNSVKCSGGNYNFQMPVGAWPVMSSGGA VSLHF AGVT LSTQFTDFVSLNSLRFRFSLTVEEPPFSILRTRVSGLYGLPASNPNSGHE YYE IAGRFSLISLVPSNDDY
Research Area	Others
Source	E.coli
Expression Region	247-479aa
Notes	Repeated freezing and thawing is not recommended. Store working aliquots at 4°C for up to one week.
Tag Info	N-terminal 6xHis-SUMO-tagged
Mol. Weight	42.3kDa
Protein Length	partial
Image	



(Tris-Glycine gel) Discontinuous SDS-PAGE (reduced) with 5% enrichment gel and 15% separation gel.

Reconstitution

We recommend that this vial be briefly centrifuged prior to opening to bring the contents to the bottom. Please reconstitute protein in deionized sterile water to a concentration of 0.1-1.0 mg/mL. We recommend to add 5-50% of glycerol (final concentration) and aliquot for long-term storage at -20°C/-80°C. Our default final concentration of glycerol is 50%. Customers could use it as reference.

Shelf Life

The shelf life is related to many factors, storage state, buffer ingredients, storage temperature and the stability of the protein itself. Generally, the shelf life of liquid form is 6 months at -20°C/-80°C. The shelf life of lyophilized form is 12 months at -20°C/-80°C.