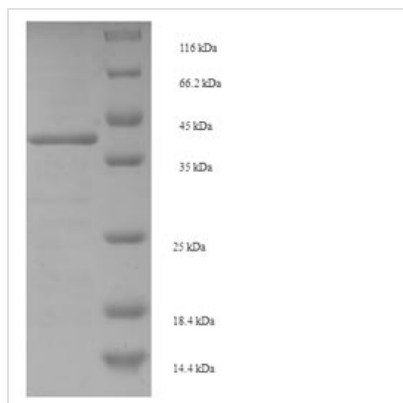




Recombinant Staphylococcus aureus Enterotoxin type E (entE)

Product Code	CSB-EP320170FKZ
Relevance	Staphylococcal enterotoxins cause the intoxication staphylococcal food poisoning syndrome. The illness characterized by high fever, hypotension, diarrhea, shock, and in some cases death.
Abbreviation	Recombinant Staphylococcus aureus entE protein
Storage	The shelf life is related to many factors, storage state, buffer ingredients, storage temperature and the stability of the protein itself. Generally, the shelf life of liquid form is 6 months at -20°C/-80°C. The shelf life of lyophilized form is 12 months at -20°C/-80°C.
Uniprot No.	P12993
Alias	SEE
Product Type	Recombinant Protein
Immunogen Species	Staphylococcus aureus
Purity	Greater than 90% as determined by SDS-PAGE.
Sequence	SEEINEKDLRKKSELQRNALSNLRQIYYYNEKAITENKESDDQFLENTLLFKGFF TGHPWYNDLLVDLGSKDATNKYKGKKVDLYGAYYGYQCAGGTPNKTACMYG GVTLHDNNRLTEKKVPINLWIDGKQTTVPIDKVKTSKKEVTVQELDLQARHYL HGKFGLYNSDSFGGKVQRGLIVFHSSEGSTVSYDLFDAQGQYPDTLLRIYRDN KTINSENLDLYLYTT
Research Area	Others
Source	E.coli
Target Names	entE
Expression Region	28-257aa
Notes	Repeated freezing and thawing is not recommended. Store working aliquots at 4°C for up to one week.
Tag Info	N-terminal 6xHis-SUMO-tagged
Mol. Weight	42.4kDa
Protein Length	Full Length of Mature Protein
Image	



(Tris-Glycine gel) Discontinuous SDS-PAGE (reduced) with 5% enrichment gel and 15% separation gel.

Description

Dive into the study of bacterial pathogenesis with the Recombinant *Staphylococcus aureus* entE. Known as the Enterotoxin type E (SEE), this bacterial protein plays a crucial role in the infectious disease process. With origins in the notorious *Staphylococcus aureus*, this enterotoxin aids in understanding the host-pathogen interactions, superantigenicity, and food poisoning events associated with the bacteria.

The product comprises the mature form of the protein, incorporating amino acids 28-257, which represent the functionally vital region of the native protein. Expressed in an *E. coli* system, the product carries an N-terminal 6xHis-SUMO tag, facilitating ease in purification and detection. The purity of the Recombinant *Staphylococcus aureus* entE exceeds 90% as validated by SDS-PAGE. You have the flexibility to choose between a liquid form or a lyophilized powder based on your experiment's requirements. Harness the power of this enterotoxin to gain deeper insights into bacterial infectious diseases.

Reconstitution

We recommend that this vial be briefly centrifuged prior to opening to bring the contents to the bottom. Please reconstitute protein in deionized sterile water to a concentration of 0.1-1.0 mg/mL. We recommend to add 5-50% of glycerol (final concentration) and aliquot for long-term storage at -20°C/-80°C. Our default final concentration of glycerol is 50%. Customers could use it as reference.

Shelf Life

The shelf life is related to many factors, storage state, buffer ingredients, storage temperature and the stability of the protein itself. Generally, the shelf life of liquid form is 6 months at -20°C/-80°C. The shelf life of lyophilized form is 12 months at -20°C/-80°C.