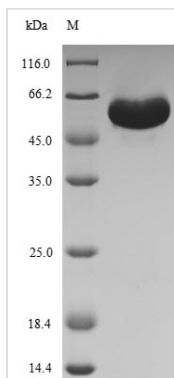




# Recombinant Spinacia oleracea Ribulose biphosphate carboxylase/oxygenase activase, chloroplastic

<b>Product Code</b>	CSB-EP319234FKI
<b>Relevance</b>	Activation of RuBisCO (ribulose-1,5-bisphosphate carboxylase/oxygenase; EC 4.1.1.39) involves the ATP-dependent carboxylation of the epsilon-amino group of lysine leading to a carbamate structure.
<b>Abbreviation</b>	Recombinant Spinacia oleracea RuBisCO activase protein
<b>Storage</b>	The shelf life is related to many factors, storage state, buffer ingredients, storage temperature and the stability of the protein itself. Generally, the shelf life of liquid form is 6 months at -20°C/-80°C. The shelf life of lyophilized form is 12 months at -20°C/-80°C.
<b>Uniprot No.</b>	P10871
<b>Alias</b>	Short name: RA Short name: RuBisCO activase
<b>Product Type</b>	Recombinant Protein
<b>Immunogen Species</b>	Spinacia oleracea (Spinach)
<b>Purity</b>	Greater than 90% as determined by SDS-PAGE.
<b>Sequence</b>	AENEEKNTDKWAHLAKDFSDDQLDIRRGKGMVDSLQAPADAGTHVPIQSSF EYESQGLRKYDIDNMLGDFYIAPAFMDKLVVHITKNFLNLPNIKIPLILGVWGGK GQGKSFQCELVFAKLGINPIMMSAGELESGNAGEPAKLIRQRYREAADLIAKG KMCALFINDLEPGAGRMGGTTQYTVNNQMVNATLMNIADNPTNVQLPGMYNK QDNARVPIIVTGNDSTLYAPLIRDGRMEKFYWAPTREDRIGVCTGIFKTDKVP AEHVVKLVDAFPGQSIDFFGALRARVYHDEVKRWVNSVGVDNVGKKLVNSKD GPPVFEQPEMTLQKLMEYGNMLVQEQENVKRVQLADQYMSSAALGDANKDA IDRGTTFFGKAAQQVSLPVAQGCTDPEAKNYDPTARSDDGSCSYNL
<b>Research Area</b>	Others
<b>Source</b>	E.coli
<b>Protein Names</b>	Recommended name: Ribulose biphosphate carboxylase/oxygenase activase, chloroplastic Short name= RA Short name= RuBisCO activase
<b>Expression Region</b>	59-472aa
<b>Notes</b>	Repeated freezing and thawing is not recommended. Store working aliquots at 4°C for up to one week.
<b>Tag Info</b>	N-terminal 6xHis-SUMO-tagged
<b>Mol. Weight</b>	61.8kDa
<b>Protein Length</b>	Full Length of Mature Protein
<b>Image</b>	



(Tris-Glycine gel) Discontinuous SDS-PAGE (reduced) with 5% enrichment gel and 15% separation gel.

### Reconstitution

We recommend that this vial be briefly centrifuged prior to opening to bring the contents to the bottom. Please reconstitute protein in deionized sterile water to a concentration of 0.1-1.0 mg/mL. We recommend to add 5-50% of glycerol (final concentration) and aliquot for long-term storage at -20°C/-80°C. Our default final concentration of glycerol is 50%. Customers could use it as reference.

### Shelf Life

The shelf life is related to many factors, storage state, buffer ingredients, storage temperature and the stability of the protein itself. Generally, the shelf life of liquid form is 6 months at -20°C/-80°C. The shelf life of lyophilized form is 12 months at -20°C/-80°C.