

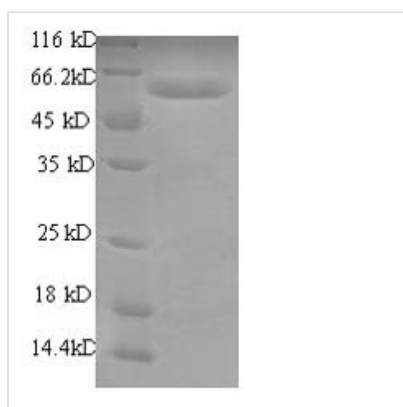


# Recombinant Human RNA-binding motif protein, Y chromosome, family 1 member A1 (RBM1A), partial

<b>Product Code</b>	CSB-EP319143HU
<b>Relevance</b>	RNA-binding protein involved in pre-mRNA splicing. Required for sperm development. Acts additively with TRA2B to promote exon 7 inclusion of the survival motor neuron SMN. Binds non-specifically to mRNAs.
<b>Abbreviation</b>	Recombinant Human RBMY1A1 protein, partial
<b>Storage</b>	The shelf life is related to many factors, storage state, buffer ingredients, storage temperature and the stability of the protein itself. Generally, the shelf life of liquid form is 6 months at -20°C/-80°C. The shelf life of lyophilized form is 12 months at -20°C/-80°C.
<b>Uniprot No.</b>	P0DJJ3
<b>Alias</b>	RNA-binding motif protein 1RNA-binding motif protein 2Y chromosome RNA recognition motif 1 ;hRBM1A
<b>Product Type</b>	Recombinant Protein
<b>Immunogen Species</b>	Homo sapiens (Human)
<b>Purity</b>	Greater than 90% as determined by SDS-PAGE.
<b>Sequence</b>	MVEADHPGKLFIGGLNRETNEKMLKAVFGKHGPISEVLLIKDRTSKSRGFADIT FENPADAKNAAKDMNGKSLHGKAIVKQAKKPSFQSGGRRRPPASSRNRSPS GSLRSARGSRGGTRGWLPSSHEGHLDDGGYTPDLKMSYSRGLIPVKRGPPSSR SGGPPPKKSAPSAVARNSWMGSGQPMSSRRRENYGVPPRRATISSWRNDR MSTRHDGYATNDGNHPSCQETRDYAPPSRGYAYRDNGHSNRDEHSSRGYR NHRSSRETRDYAPPSRGHAYRDYGHSSRRDESYRGYRNRSSRETRDYAPP SRGHGYRDYGHSSRRHESYSRGYRNHPSSRETRDYAPPHRDYAYRDYGHSS WDEHSSRGYSYHDGYGEALGRDHSEHLGSSYRDALQRYGTSHGAPPARG PRMSYGGSTCHAYSNTRDRYGRSWESYSSCGDFHYCDREHVCRKDQRNPP S
<b>Research Area</b>	Epigenetics and Nuclear Signaling
<b>Source</b>	E.coli
<b>Target Names</b>	RBM1A1
<b>Expression Region</b>	1-459aa
<b>Notes</b>	Repeated freezing and thawing is not recommended. Store working aliquots at 4°C for up to one week.
<b>Tag Info</b>	N-terminal 6xHis-tagged
<b>Mol. Weight</b>	55.9kDa
<b>Protein Length</b>	Partial



## Image



(Tris-Glycine gel) Discontinuous SDS-PAGE (reduced) with 5% enrichment gel and 15% separation gel.

## Reconstitution

We recommend that this vial be briefly centrifuged prior to opening to bring the contents to the bottom. Please reconstitute protein in deionized sterile water to a concentration of 0.1-1.0 mg/mL. We recommend to add 5-50% of glycerol (final concentration) and aliquot for long-term storage at -20°C/-80°C. Our default final concentration of glycerol is 50%. Customers could use it as reference.

## Shelf Life

The shelf life is related to many factors, storage state, buffer ingredients, storage temperature and the stability of the protein itself. Generally, the shelf life of liquid form is 6 months at -20°C/-80°C. The shelf life of lyophilized form is 12 months at -20°C/-80°C.