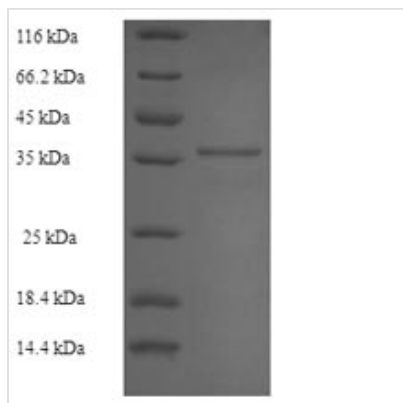


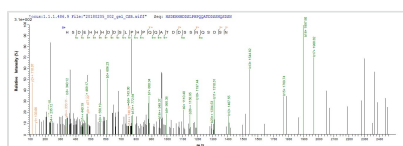


Recombinant Epstein-Barr virus Latent membrane protein 1 (LMP1), partial

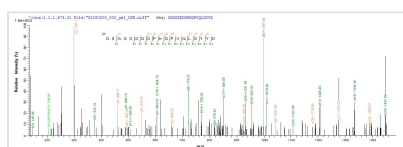
Product Code	CSB-EP318333EFE
Relevance	Acts as a CD40 functional homolog to prevent apoptosis of infected B-lymphocytes and drive their proliferation. Functions as a constitutively active tumor necrosis factor receptor that induces the activation of several signaling pathways, including those of the NF-kappa-B family. LMP1 signaling leads to up-regulation of antiapoptotic proteins and provide growth signals in latently infected cells. It is a short-lived protein probably degraded by the proteasome .
Abbreviation	Recombinant Epstein-Barr virus LMP1 protein, partial
Storage	The shelf life is related to many factors, storage state, buffer ingredients, storage temperature and the stability of the protein itself. Generally, the shelf life of liquid form is 6 months at -20°C/-80°C. The shelf life of lyophilized form is 12 months at -20°C/-80°C.
Uniprot No.	P13198
Product Type	Recombinant Proteins
Immunogen Species	Epstein-Barr virus (strain Raji) (HHV-4) (Human herpesvirus 4)
Purity	Greater than 90% as determined by SDS-PAGE.
Sequence	YYHGQRHSDEHHHDDSLPHPQQATDDSSNQSDSNSNEGRHLLLVSGAGDGP PLCSQNLGAPGGGPNNGPQDPDNTDDNGPQDPDNTDDNGPHDPLPQDPDN TDDNGPQDPDNTDDNGPHDPLPHNPSDSAGNDGGPPQLTEEVENKGGDQG PPLMTDGGGGHSHDSGHDGIDPHLPTLLLGTSGSGGDDDDPHGVPVQLSYD
Source	E.coli
Target Names	LMP1
Expression Region	185-386aa
Notes	Repeated freezing and thawing is not recommended. Store working aliquots at 4°C for up to one week.
Tag Info	N-terminal 6xHis-SUMO-tagged
Mol. Weight	37.0kDa
Protein Length	Partial
Image	



(Tris-Glycine gel) Discontinuous SDS-PAGE (reduced) with 5% enrichment gel and 15% separation gel.



Based on the SEQUEST from database of E.coli host and target protein, the LC-MS/MS Analysis result of CSB-EP318333EFE could indicate that this peptide derived from E.coli-expressed Epstein-Barr virus (strain Raji) (HHV-4) (Human herpesvirus 4) LMP1.



Based on the SEQUEST from database of E.coli host and target protein, the LC-MS/MS Analysis result of CSB-EP318333EFE could indicate that this peptide derived from E.coli-expressed Epstein-Barr virus (strain Raji) (HHV-4) (Human herpesvirus 4) LMP1.

Description

Constructing a plasmid that codes for the Epstein-Barr virus (strain Raji) LMP1 protein (185-386aa) initiates the generation of the recombinant Epstein-Barr virus (strain Raji) LMP1 protein. The constructed plasmid is transformed into 185-386aa cells. Positive e.coli cells are selected and then cultured under conditions that encourage the expression of the gene of interest. The protein is equipped with a N-terminal 6xHis-SUMO tag. After that, affinity purification is employed to isolate and purify the recombinant LMP1 protein from the cell lysate. The purity of the resulting recombinant LMP1 protein is over 90%, determined by SDS-PAGE.

Shelf Life

The shelf life is related to many factors, storage state, buffer ingredients, storage temperature and the stability of the protein itself. Generally, the shelf life of liquid form is 6 months at -20°C/-80°C. The shelf life of lyophilized form is 12 months at -20°C/-80°C.