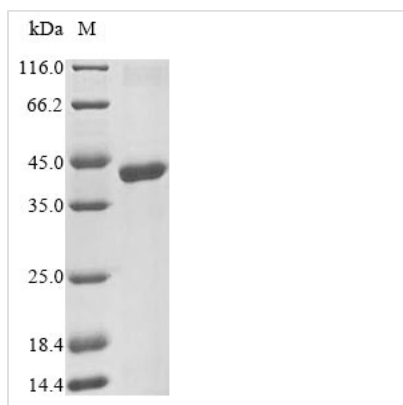


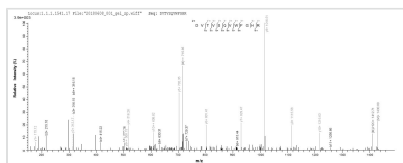


# Recombinant Human herpesvirus 1 Envelope glycoprotein B (gB), partial

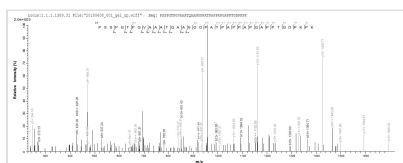
<b>Product Code</b>	CSB-EP318023HWY
<b>Relevance</b>	Envelope glycoprotein that forms spikes at the surface of virion envelope. Essential for the initial attachment to heparan sulfate moities of the host cell surface proteoglycans. Involved in fusion of viral and cellular membranes leading to virus entry into the host cell. Following initial binding to its host receptors, membrane fusion is mediated by the fusion machinery composed at least of gB and the heterodimer gH/gL. May be involved in the fusion between the virion envelope and the outer nuclear membrane during virion egress. Also plays a role, together with gK, in virus-induced cell-to-cell fusion
<b>Abbreviation</b>	Recombinant Human herpesvirus 1 gB protein, partial
<b>Storage</b>	The shelf life is related to many factors, storage state, buffer ingredients, storage temperature and the stability of the protein itself. Generally, the shelf life of liquid form is 6 months at -20°C/-80°C. The shelf life of lyophilized form is 12 months at -20°C/-80°C.
<b>Uniprot No.</b>	P10211
<b>Product Type</b>	Recombinant Protein
<b>Immunogen Species</b>	Human herpesvirus 1 (strain 17) (HHV-1) (Human herpes simplex virus 1)
<b>Purity</b>	Greater than 90% as determined by SDS-PAGE.
<b>Sequence</b>	APSSPGTPGVAAATQAANGGPATPAPPAPGAPPTGDPKPKKNRKP KPPKPPR PAGDNATVAAGHATLREHLRDIKAENTDANFYVCPPTGATVVQFEQPRRC TRPEGQNYTEGIAVVFKENIAPYKFKATMYKDVTVSQVWFGHRYSQFMGIFE DRAPVPFEEVIDKINAKGVCRSTAKYVRNNLETTAFHRDDHETDMELKPANAA TRTSRGWHTTDLKYNPSRVEAFHRYGTTVNCIVEEVDARSVYPY
<b>Research Area</b>	Others
<b>Source</b>	E.coli
<b>Target Names</b>	gB
<b>Protein Names</b>	Recommended name: Envelope glycoprotein B Short name= gBAlternative name(s): gB-1 gB1
<b>Expression Region</b>	31-284aa
<b>Notes</b>	Repeated freezing and thawing is not recommended. Store working aliquots at 4°C for up to one week.
<b>Tag Info</b>	N-terminal 10xHis-tagged and C-terminal Myc-tagged
<b>Mol. Weight</b>	34.9 kDa
<b>Protein Length</b>	Partial
<b>Image</b>	



(Tris-Glycine gel) Discontinuous SDS-PAGE (reduced) with 5% enrichment gel and 15% separation gel.



Based on the SEQUEST from database of E.coli host and target protein, the LC-MS/MS Analysis result of CSB-EP318023HWY could indicate that this peptide derived from E.coli-expressed Human herpesvirus 1 (strain 17) (HHV-1) (Human herpes simplex virus 1) gB.



Based on the SEQUEST from database of E.coli host and target protein, the LC-MS/MS Analysis result of CSB-EP318023HWY could indicate that this peptide derived from E.coli-expressed Human herpesvirus 1 (strain 17) (HHV-1) (Human herpes simplex virus 1) gB.

## Reconstitution

We recommend that this vial be briefly centrifuged prior to opening to bring the contents to the bottom. Please reconstitute protein in deionized sterile water to a concentration of 0.1-1.0 mg/mL. We recommend to add 5-50% of glycerol (final concentration) and aliquot for long-term storage at -20°C/-80°C. Our default final concentration of glycerol is 50%. Customers could use it as reference.

## Shelf Life

The shelf life is related to many factors, storage state, buffer ingredients, storage temperature and the stability of the protein itself. Generally, the shelf life of liquid form is 6 months at -20°C/-80°C. The shelf life of lyophilized form is 12 months at -20°C/-80°C.