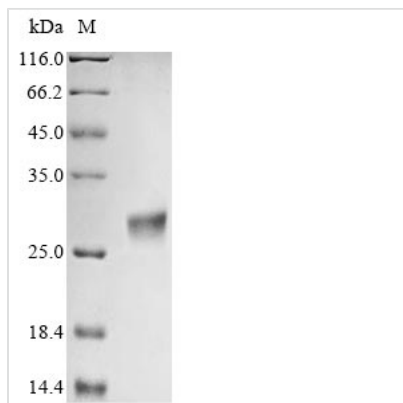




# Recombinant *Aspergillus clavatus* Ribonuclease clavin (cla)

<b>Product Code</b>	CSB-EP316109AVC
<b>Abbreviation</b>	Recombinant <i>Aspergillus clavatus</i> Ribonuclease clavin protein
<b>Storage</b>	The shelf life is related to many factors, storage state, buffer ingredients, storage temperature and the stability of the protein itself. Generally, the shelf life of liquid form is 6 months at -20°C/-80°C. The shelf life of lyophilized form is 12 months at -20°C/-80°C.
<b>Uniprot No.</b>	P0CL71
<b>Form</b>	Liquid or Lyophilized powder
<b>Storage Buffer</b>	If the delivery form is liquid, the default storage buffer is Tris/PBS-based buffer, 5%-50% glycerol. If the delivery form is lyophilized powder, the buffer before lyophilization is Tris/PBS-based buffer, 6% Trehalose.
<b>Product Type</b>	Recombinant Protein
<b>Immunogen Species</b>	<i>Aspergillus clavatus</i> (strain ATCC 1007 / CBS 513.65 / DSM 816 / NCTC 3887 / NRRL 1)
<b>Purity</b>	Greater than 85% as determined by SDS-PAGE.
<b>Sequence</b>	AATWTCMNEQKNPKTKNYENKRLLYNQNNAESNAHHAPLSDGKTGSSYPHW FTNGYDGDGKILKGRTPIKWGNSDCDRPPKHSKNGDGKNDHYLLEFPTFPDG HQYNFDSKKPKEDPGPARVIYTPNKVFCGIVAHTRENQGDLKLC SH
<b>Research Area</b>	Transcription
<b>Source</b>	E.coli
<b>Target Names</b>	cla
<b>Expression Region</b>	28-177aa
<b>Notes</b>	Repeated freezing and thawing is not recommended. Store working aliquots at 4°C for up to one week.
<b>Tag Info</b>	N-terminal 10xHis-tagged and C-terminal Myc-tagged
<b>Mol. Weight</b>	24.5 kDa
<b>Protein Length</b>	Full Length of Mature Protein
<b>Image</b>	



(Tris-Glycine gel) Discontinuous SDS-PAGE (reduced) with 5% enrichment gel and 15% separation gel.

## Description

The pipeline for the recombinant *Aspergillus clavatus* (strain ATCC 1007 / CBS 513.65 / DSM 816 / NCTC 3887 / NRRL 1) cla protein production in e.coli cells consists of the following consecutive steps: construction of the expression vector encoding the *Aspergillus clavatus* (strain ATCC 1007 / CBS 513.65 / DSM 816 / NCTC 3887 / NRRL 1) cla protein (28-177aa), its transformation into e.coli cells, high-density cultivation and induction of the positive cells, cell lysis, and expression analysis. The protein features a N-terminal 10xHis tag and C-terminal Myc tag fusion. The resulting recombinant *Aspergillus clavatus* (strain ATCC 1007 / CBS 513.65 / DSM 816 / NCTC 3887 / NRRL 1) cla protein is purified from the cell lysate through affinity purification, and its purity is greater than 85% determined by the SDS-PAGE.

## Reconstitution

We recommend that this vial be briefly centrifuged prior to opening to bring the contents to the bottom. Please reconstitute protein in deionized sterile water to a concentration of 0.1-1.0 mg/mL. We recommend to add 5-50% of glycerol (final concentration) and aliquot for long-term storage at -20°C/-80°C. Our default final concentration of glycerol is 50%. Customers could use it as reference.

## Shelf Life

The shelf life is related to many factors, storage state, buffer ingredients, storage temperature and the stability of the protein itself.

Generally, the shelf life of liquid form is 6 months at -20°C/-80°C. The shelf life of lyophilized form is 12 months at -20°C/-80°C.