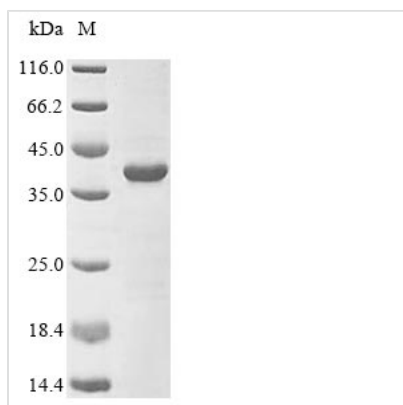




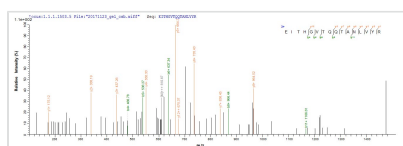
# Recombinant Staphylococcus epidermidis

## Extracellular elastase (sepA)

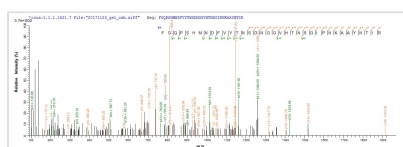
<b>Product Code</b>	CSB-EP313815SLD
<b>Relevance</b>	Protease that has a low substrate specificity. Glucagon is preferentially cleaved between aromatic (Phe) and hydrophobic (Val) amino acids. Hydrolyzes casein and elastin
<b>Abbreviation</b>	Recombinant Staphylococcus epidermidis sepA protein
<b>Storage</b>	The shelf life is related to many factors, storage state, buffer ingredients, storage temperature and the stability of the protein itself. Generally, the shelf life of liquid form is 6 months at -20°C/-80°C. The shelf life of lyophilized form is 12 months at -20°C/-80°C.
<b>Uniprot No.</b>	P0C0Q4
<b>Product Type</b>	Recombinant Protein
<b>Immunogen Species</b>	Staphylococcus epidermidis (strain ATCC 12228)
<b>Purity</b>	Greater than 85% as determined by SDS-PAGE.
<b>Sequence</b>	AATTGTGKGVLDGTDKQININSVSGGYALQDLTQQGTL SAYNYDANTGQAYLM QDKDKNFVDDEQRAGVDANYYAKETYDYKNTFGRESYDNQGSPIISIAHVNN FQGQDNRRNNAAWIGDKMIYGDGDGRTFTALSGANDVVAHEITHGVTQQTANL VYRSQSGALNESFSDVFGYFIDDEDFLMGEDVYTPGVGGDALRSMSNPERFG QPSHMNDFVYTNSDNGGVHTNSGIPNKAAYNTIRSIGKQRSEQIYYRALT VYLT SNSDFQDAKASLQQA AFDLYGDGIAQQVGQAWDSVGV
<b>Research Area</b>	Others
<b>Source</b>	E.coli
<b>Target Names</b>	sepA
<b>Protein Names</b>	SEPP1
<b>Expression Region</b>	208-507aa
<b>Notes</b>	Repeated freezing and thawing is not recommended. Store working aliquots at 4°C for up to one week.
<b>Tag Info</b>	N-terminal 10xHis-tagged and C-terminal Myc-tagged
<b>Mol. Weight</b>	37.7 kDa
<b>Protein Length</b>	Full Length of Mature Protein
<b>Image</b>	



(Tris-Glycine gel) Discontinuous SDS-PAGE (reduced) with 5% enrichment gel and 15% separation gel.



Based on the SEQUEST from database of E.coli host and target protein, the LC-MS/MS Analysis result of CSB-EP313815SLD could indicate that this peptide derived from E.coli-expressed Staphylococcus epidermidis (strain ATCC 12228) sepA.



Based on the SEQUEST from database of E.coli host and target protein, the LC-MS/MS Analysis result of CSB-EP313815SLD could indicate that this peptide derived from E.coli-expressed Staphylococcus epidermidis (strain ATCC 12228) sepA.

## Description

Constructing a plasmid that codes for the Staphylococcus epidermidis (strain ATCC 12228) sepA protein (208-507aa) initiates the generation of the recombinant Staphylococcus epidermidis (strain ATCC 12228) sepA protein. The constructed plasmid is transformed into 208-507aa cells. Positive e.coli cells are selected and then cultured under conditions that encourage the expression of the gene of interest. The protein is equipped with a N-terminal 10xHis tag and C-terminal Myc tag. After that, affinity purification is employed to isolate and purify the recombinant sepA protein from the cell lysate. The purity of the resulting recombinant sepA protein is over 85%, determined by SDS-PAGE.

## Reconstitution

We recommend that this vial be briefly centrifuged prior to opening to bring the contents to the bottom. Please reconstitute protein in deionized sterile water to a concentration of 0.1-1.0 mg/mL. We recommend to add 5-50% of glycerol (final concentration) and aliquot for long-term storage at -20°C/-80°C. Our default final concentration of glycerol is 50%. Customers could use it as reference.

## Shelf Life

The shelf life is related to many factors, storage state, buffer ingredients, storage temperature and the stability of the protein itself. Generally, the shelf life of liquid form is 6 months at -20°C/-80°C. The shelf life of lyophilized form is 12 months at -20°C/-80°C.