

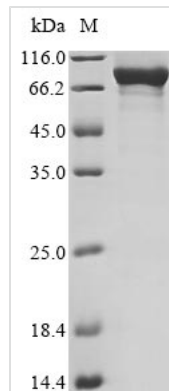


Recombinant Human 2-5A-dependent ribonuclease (RNASEL)

Product Code	CSB-EP313223HU
Abbreviation	Recombinant Human RNASEL protein
Storage	The shelf life is related to many factors, storage state, buffer ingredients, storage temperature and the stability of the protein itself. Generally, the shelf life of liquid form is 6 months at -20°C/-80°C. The shelf life of lyophilized form is 12 months at -20°C/-80°C.
Uniprot No.	Q05823
Form	Liquid or Lyophilized powder
Storage Buffer	If the delivery form is liquid, the default storage buffer is Tris/PBS-based buffer, 5%-50% glycerol. If the delivery form is lyophilized powder, the buffer before lyophilization is Tris/PBS-based buffer, 6% Trehalose.
Product Type	Recombinant Protein
Immunogen Species	Homo sapiens (Human)
Purity	Greater than 85% as determined by SDS-PAGE.
Sequence	MESRDHNNPQEGPTSSSGRRAAVEDNHLLIKAVQNEDVDLVQQLLEGGANVN FQEEEGGWTPHNAVQMSREDIVELLRRHGADPVLRRKNGATPFILAAIAGSV KLLKLFLSKGADVNECDFYGFTAFMEAAYGKVKALKFLYKRGANVNLRRKTK EDQERLRKGGATALMDAAEKGHVEVLKILLDEMGAADVACDNMGRNALIHALL SSDDSDVEAITHLLLDHGADVNVRRGERGKTPLILAVEKKHLGLVQRLLEQEHIEI NDTSDSGKTALLLAVELKLKKIAELLCKRGASTDCGDLVMTARRNYDHSVLKVL LSHGAKEDFHPPAEDWKPPQSSHWGAALKDLHRIYRPMIGKLKFFIDEKYKIADT SEGGIYLGIFYEKQEVAVKTFCEGSPRAQREVSCQSSRENSHLVTFYGSSEH RGHLFVCVTLCEQTLACLVDHVRGEDVENEDEFARNVLSSIFKAVQELHLSC GYTHQDLQPQNILIDSKAAHLADFDKSIKWAGDPQEVKRDLEDLGRLLVLYVV KKGSISFEDLKAQSNEEVVQLSPDEETKDLIHLRFHPGEHVRDCLSDLLGHPFF WTWESRYRTLNRVGNESDIKTRKSESEILRLLQPGPSEHSKSFDKWTTKINEC VMKKMKNKFYEKRGNFYQNTVGDLLKFIRNLGEHIDEKHKMKMLKIGDPSLYF QKTFPDLVIYVYTKLQNTTEYRKHFQTHSPNKPQCDGAGGASGLASPGC
Research Area	Others
Source	E.coli
Target Names	RNASEL
Expression Region	1-741aa
Notes	Repeated freezing and thawing is not recommended. Store working aliquots at 4°C for up to one week.
Tag Info	C-terminal Myc-tagged
Mol. Weight	85.1 kDa


Protein Length

Full Length

Image


(Tris-Glycine gel) Discontinuous SDS-PAGE (reduced) with 5% enrichment gel and 15% separation gel.

Description

In the production of the recombinant Human RNASEL protein in e.coli cells, a sequential pipeline involves constructing the expression vector coding for the Human RNASEL protein (1-741aa), transforming the recombinant vector into e.coli cells, selecting the positive cells and cultivating them, lysing cells, and characterizing the protein. The resulting recombinant Human RNASEL protein is purified from the cell lysate using affinity purification. Its purity exceeds 85%, as determined by SDS-PAGE.

Reconstitution

We recommend that this vial be briefly centrifuged prior to opening to bring the contents to the bottom. Please reconstitute protein in deionized sterile water to a concentration of 0.1-1.0 mg/mL. We recommend to add 5-50% of glycerol (final concentration) and aliquot for long-term storage at -20°C/-80°C. Our default final concentration of glycerol is 50%. Customers could use it as reference.

Shelf Life

The shelf life is related to many factors, storage state, buffer ingredients, storage temperature and the stability of the protein itself. Generally, the shelf life of liquid form is 6 months at -20°C/-80°C. The shelf life of lyophilized form is 12 months at -20°C/-80°C.