



Recombinant Human 2-5A-dependent ribonuclease (RNASEL), partial

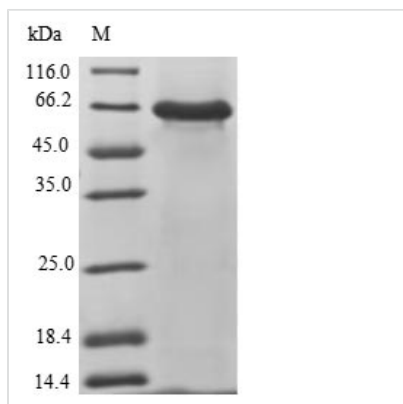
Product Code	CSB-EP313223HU1
Relevance	Endoribonuclease that functions in the interferon (IFN) antiviral response. In INF treated and virus infected cells, RNASEL probably mediates its antiviral effects through a combination of direct cleavage of single-stranded viral RNAs, inhibition of protein synthesis through the degradation of rRNA, induction of apoptosis, and induction of other antiviral genes. RNASEL mediated apoptosis is the result of a JNK-dependent stress-response pathway leading to cytochrome c release from mitochondria and caspase-dependent apoptosis. Therefore, activation of RNASEL could lead to elimination of virus infected cells under some circumstances. Might play a central role in the regulation of mRNA turnover.
Abbreviation	Recombinant Human RNASEL protein, partial
Storage	The shelf life is related to many factors, storage state, buffer ingredients, storage temperature and the stability of the protein itself. Generally, the shelf life of liquid form is 6 months at -20°C/-80°C. The shelf life of lyophilized form is 12 months at -20°C/-80°C.
Uniprot No.	Q05823
Product Type	Recombinant Protein
Immunogen Species	Homo sapiens (Human)
Purity	Greater than 90% as determined by SDS-PAGE.
Sequence	HPPAEDWKPQSSHWGAALKDLHRIYRPMIGKLKFFIDEKYKIADTSEGGIYLG YEKQEVAVKTFCEGSPRAQREVSC LQSSRENSHLVTFYGSSESHRGHLFVCVT LCEQTLEACLDVHRGEDVNEEDEFARNVLSSIFKAVQELHLSCGYTHQDLQP QNILIDSKKAAHLADFDKSIKWAGDPQEVKRDLEDLGRVLVLYVVKKGSISFEDL KAQSNEEVVQLSPDEETKDLIHRLFHPGEHV RDCLSDLLGHPFFWTWESRYR TLRNVGNESDIKTRKSESEILRLLQPGPSEHSKSF DKWTTKINECVMKKMNKF YEKRGNFYQNTVGDLLKFIRNLGEHIDE EKHKMKL KIGDPSLYFQKTFPDLVIY VYTKLQNT EYRKHF PQTHSPNKPQCDGAGGASGLASPGC
Research Area	Epigenetics and Nuclear Signaling
Source	E.coli
Target Names	RNASEL
Protein Names	Ribonuclease 4Ribonuclease L ;RNase L
Expression Region	330-741aa
Notes	Repeated freezing and thawing is not recommended. Store working aliquots at 4°C for up to one week.
Tag Info	N-terminal 6xHis-SUMO-tagged



Mol. Weight 63.4 kDa

Protein Length Partial

Image



(Tris-Glycine gel) Discontinuous SDS-PAGE (reduced) with 5% enrichment gel and 15% separation gel.

Reconstitution

We recommend that this vial be briefly centrifuged prior to opening to bring the contents to the bottom. Please reconstitute protein in deionized sterile water to a concentration of 0.1-1.0 mg/mL. We recommend to add 5-50% of glycerol (final concentration) and aliquot for long-term storage at -20°C/-80°C. Our default final concentration of glycerol is 50%. Customers could use it as reference.

Shelf Life

The shelf life is related to many factors, storage state, buffer ingredients, storage temperature and the stability of the protein itself. Generally, the shelf life of liquid form is 6 months at -20°C/-80°C. The shelf life of lyophilized form is 12 months at -20°C/-80°C.