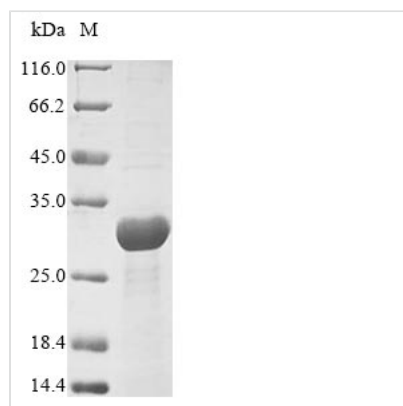




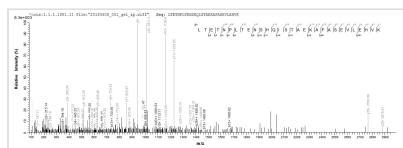
Recombinant Yersinia enterocolitica Yop proteins translocation protein M (yscM)

Product Code	CSB-EP312449YAAQ
Abbreviation	Recombinant Yersinia enterocolitica yscM protein
Storage	The shelf life is related to many factors, storage state, buffer ingredients, storage temperature and the stability of the protein itself. Generally, the shelf life of liquid form is 6 months at -20°C/-80°C. The shelf life of lyophilized form is 12 months at -20°C/-80°C.
Uniprot No.	Q01254
Product Type	Recombinant Protein
Immunogen Species	Yersinia enterocolitica
Purity	Greater than 85% as determined by SDS-PAGE.
Sequence	MKINTLQSLINQQITQVGHGGQAGRLTETNPLTENS HQISTA EKAFASEVLEHV KNTALSRHDIACLLPRVSNLELKQ GKAGEVIVTGLRTEQLSLSDAKLLLEAAMR QDTAADG
Research Area	Others
Source	E.coli
Target Names	yscM
Protein Names	Recommended name: Yop proteins translocation protein M
Expression Region	1-115aa
Notes	Repeated freezing and thawing is not recommended. Store working aliquots at 4°C for up to one week.
Tag Info	N-terminal 6xHis-SUMO-tagged
Mol. Weight	28.4 kDa
Protein Length	Full Length

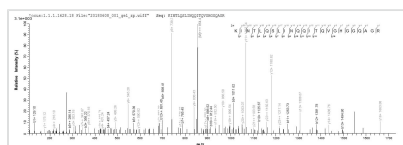
Image



(Tris-Glycine gel) Discontinuous SDS-PAGE (reduced) with 5% enrichment gel and 15% separation gel.



Based on the SEQUEST from database of E.coli host and target protein, the LC-MS/MS Analysis result of CSB-EP312449YAQ could indicate that this peptide derived from E.coli-expressed *Yersinia enterocolitica* yscM.



Based on the SEQUEST from database of E.coli host and target protein, the LC-MS/MS Analysis result of CSB-EP312449YAQ could indicate that this peptide derived from E.coli-expressed *Yersinia enterocolitica* yscM.

Reconstitution

We recommend that this vial be briefly centrifuged prior to opening to bring the contents to the bottom. Please reconstitute protein in deionized sterile water to a concentration of 0.1-1.0 mg/mL. We recommend to add 5-50% of glycerol (final concentration) and aliquot for long-term storage at -20°C/-80°C. Our default final concentration of glycerol is 50%. Customers could use it as reference.

Shelf Life

The shelf life is related to many factors, storage state, buffer ingredients, storage temperature and the stability of the protein itself. Generally, the shelf life of liquid form is 6 months at -20°C/-80°C. The shelf life of lyophilized form is 12 months at -20°C/-80°C.