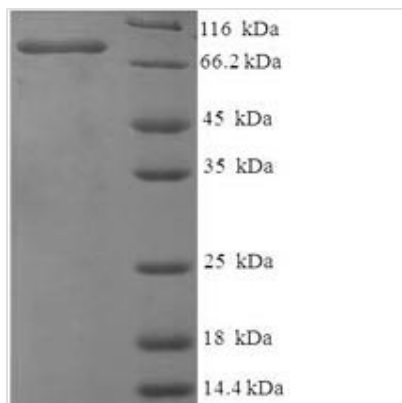




# Recombinant Chicken Vitellogenin-1 (VTG1), partial

<b>Product Code</b>	CSB-EP311247CH
<b>Relevance</b>	Precursor of the egg-yolk proteins that are sources of nutrients during early development of oviparous organisms. Phosvitin is believed to be of importance in sequestering calcium, iron and other cations for the developing bryo.
<b>Abbreviation</b>	Recombinant Chicken VTG1 protein, partial
<b>Storage</b>	The shelf life is related to many factors, storage state, buffer ingredients, storage temperature and the stability of the protein itself. Generally, the shelf life of liquid form is 6 months at -20°C/-80°C. The shelf life of lyophilized form is 12 months at -20°C/-80°C.
<b>Uniprot No.</b>	P87498
<b>Product Type</b>	Recombinant Proteins
<b>Immunogen Species</b>	Gallus gallus (Chicken)
<b>Purity</b>	Greater than 90% as determined by SDS-PAGE.
<b>Sequence</b>	<p>FGENKVYTYNYESILFSGIPEKGLARTGIRIRSEVEISGIGPKLCLIRIHSIEAAEY  NGIWPTSSFSRSLKLTQALTGQLSIPIKFEYSNGHVGNLMAPDSVSDDGLNIYR  GILNILELSLKKMQHSYSIQEAGIGGICNTTYAIQENKKANLVDVTKSKDLNSCE  EKVQVVTGSAYTQPCQTCQQRNKNSTRATATYNYKIKYTHNEAVITQAEVEEVH  QFTPFEITGGNAIVEARQKLALIEVQKQVAEVPPKEFQKRGSLQYQFGSELLQ  LPVHLFKIKDVERQIEERLQDLVETTYEQLPSDAPAKALKLMHLLRAANEENYE  SVWKQFSSRPAYRRYLLDLLPAAASHRSLRFLRHKMERQELTNWEIAQTVLVA  LHSSSPTQEVMEETLIVKKHCPRSSSVLRKVCLLSYASLCHKRCSSPYSCSE  CLQVFHVFAGEALGKSNIEEVLLALKALGNVGHPPASIKHIKKFLPGYAAGASELP  LKVHETAVMALKSIGMRDPQMVQAITLEIFLNHKKIHPRI RMLAAVVLLKETKGPLPI  LMILVDAVLKEPSMQVASFIYSHLRALGRSTAPDLQMMASACRMAVRALSPKF  DRSGYQFSKVFRFSMFKEFLMSGLAACYFVLNNAGSLIPTMAV</p>
<b>Research Area</b>	Others
<b>Source</b>	E.coli
<b>Target Names</b>	VTG1
<b>Expression Region</b>	24-663aa
<b>Notes</b>	Repeated freezing and thawing is not recommended. Store working aliquots at 4°C for up to one week.
<b>Tag Info</b>	N-terminal 6xHis-tagged
<b>Mol. Weight</b>	72.4kDa
<b>Protein Length</b>	Partial
<b>Image</b>	



(Tris-Glycine gel) Discontinuous SDS-PAGE (reduced) with 5% enrichment gel and 15% separation gel.

## Shelf Life

The shelf life is related to many factors, storage state, buffer ingredients, storage temperature and the stability of the protein itself. Generally, the shelf life of liquid form is 6 months at -20°C/-80°C. The shelf life of lyophilized form is 12 months at -20°C/-80°C.