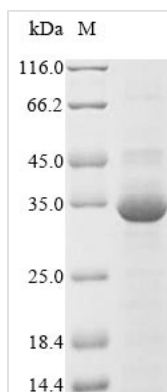




Recombinant Agkistrodon contortrix contortrix Thrombin-like enzyme contortrixobin

Product Code	CSB-EP307045AET
Abbreviation	Recombinant Agkistrodon contortrix contortrix Thrombin-like enzyme contortrixobin protein
Storage	The shelf life is related to many factors, storage state, buffer ingredients, storage temperature and the stability of the protein itself. Generally, the shelf life of liquid form is 6 months at -20°C/-80°C. The shelf life of lyophilized form is 12 months at -20°C/-80°C.
Uniprot No.	P82981
Product Type	Recombinant Protein
Immunogen Species	Agkistrodon contortrix contortrix (Southern copperhead)
Purity	Greater than 85% as determined by SDS-PAGE.
Sequence	VVGGDECNINEHRFLVAIFNSNGFVCSGTLINQEWVLTAAHCDSTDFQIKLGAH SKKVLNEDEQIRNPKEKFICPNKKNDEVLDKDIMLIKLDsrVSNSEHIAPLSLPS SPPSVGSVCHIMGWGSITPIEVTFPDVPHCAYINLLDDAACQPGYPEVLPEYRT LCAGILEGGKDTcNYDSGGPLICNGQFQGIVSYGAHPCGQSLKPGIYTKVFDY NDWIQSIIAGNTAATCPP
Research Area	Others
Source	E.coli
Protein Names	Recommended name: Thrombin-like enzyme contortrixobin Short name= SVTLE xx EC= 3.4.21.- Alternative name(s): Fibrinogen-clotting enzyme Snake venom serine protease Short name= SVSP Venombin B
Expression Region	1-234aa
Notes	Repeated freezing and thawing is not recommended. Store working aliquots at 4°C for up to one week.
Tag Info	N-terminal 10xHis-tagged and C-terminal Myc-tagged
Mol. Weight	32.4 kDa
Protein Length	Full Length
Image	



(Tris-Glycine gel) Discontinuous SDS-PAGE (reduced) with 5% enrichment gel and 15% separation gel.

Reconstitution

We recommend that this vial be briefly centrifuged prior to opening to bring the contents to the bottom. Please reconstitute protein in deionized sterile water to a concentration of 0.1-1.0 mg/mL. We recommend to add 5-50% of glycerol (final concentration) and aliquot for long-term storage at -20°C/-80°C. Our default final concentration of glycerol is 50%. Customers could use it as reference.

Shelf Life

The shelf life is related to many factors, storage state, buffer ingredients, storage temperature and the stability of the protein itself. Generally, the shelf life of liquid form is 6 months at -20°C/-80°C. The shelf life of lyophilized form is 12 months at -20°C/-80°C.