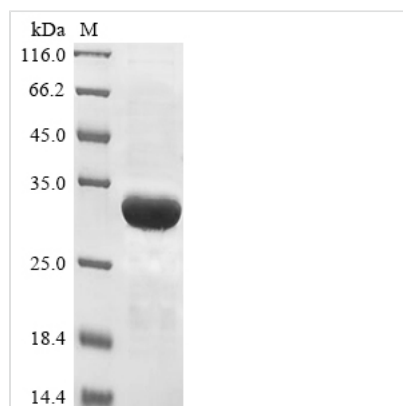




Recombinant Lentinula edodes Serine protease inhibitor

Product Code	CSB-EP305524LDVa2
Abbreviation	Recombinant Lentinula edodes Serine protease inhibitor protein
Storage	The shelf life is related to many factors, storage state, buffer ingredients, storage temperature and the stability of the protein itself. Generally, the shelf life of liquid form is 6 months at -20°C/-80°C. The shelf life of lyophilized form is 12 months at -20°C/-80°C.
Uniprot No.	P81639
Storage Buffer	Tris-based buffer,50% glycerol
Product Type	Recombinant Proteins
Immunogen Species	Lentinula edodes (Shiitake mushroom) (Lentinus edodes)
Purity	Greater than 85% as determined by SDS-PAGE.
Sequence	SLETGRYLIHNGNNIVSRNLAEDRSLNPKRIVLLEPTDKIQLTWIIEKSGDEYILN NRGAPTAHIEDHVFALLIHQEGATKWSIEAVPRHGRNAYIIKGSDGKGWVAPD KAGEQIIYRTLIVGPSEPPTFPLNQVFQIIKLE
Research Area	Others
Source	E.coli
Target Names	N/A
Expression Region	1-142aa
Notes	Repeated freezing and thawing is not recommended. Store working aliquots at 4°C for up to one week.
Tag Info	N-terminal 6xHis-SUMO-tagged
Mol. Weight	28.9 kDa
Protein Length	Full Length

Image



(Tris-Glycine gel) Discontinuous SDS-PAGE (reduced) with 5% enrichment gel and 15% separation gel.



Shelf Life

The shelf life is related to many factors, storage state, buffer ingredients, storage temperature and the stability of the protein itself.

Generally, the shelf life of liquid form is 6 months at -20°C/-80°C. The shelf life of lyophilized form is 12 months at -20°C/-80°C.