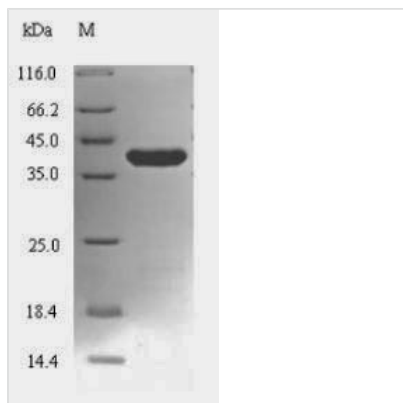


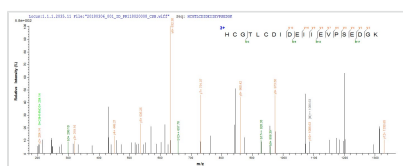


# Recombinant Mycoplasma pneumoniae Lon protease (lon), partial

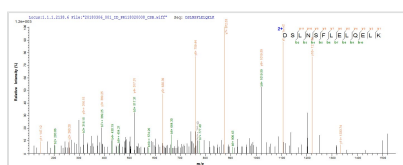
<b>Product Code</b>	CSB-EP305230MLW
<b>Relevance</b>	ATP-dependent serine protease that mediates the selective degradation of mutant and abnormal proteins as well as certain short-lived regulatory proteins. Required for cellular homeostasis and for survival from DNA damage and developmental changes induced by stress. Degrades polypeptides processively to yield small peptide fragments that are 5 to 10 amino acids long. Binds to DNA in a double-stranded, site-specific manner.
<b>Abbreviation</b>	Recombinant Mycoplasma pneumoniae lon protein, partial
<b>Storage</b>	The shelf life is related to many factors, storage state, buffer ingredients, storage temperature and the stability of the protein itself. Generally, the shelf life of liquid form is 6 months at -20°C/-80°C. The shelf life of lyophilized form is 12 months at -20°C/-80°C.
<b>Uniprot No.</b>	P78025
<b>Alias</b>	ATP-dependent protease La
<b>Product Type</b>	Recombinant Protein
<b>Immunogen Species</b>	Mycoplasma pneumoniae (strain ATCC 29342 / M129)
<b>Purity</b>	Greater than 90% as determined by SDS-PAGE.
<b>Sequence</b>	MPAVKKPQILVVRNQVIFPYNGFELDVGRERSKKLIKALKNLKTKRLVLVTQKN SDQLNPEFDDIYHCGTLCIDIDEIIEVPSDGKTADYKIKGKGLQRVAITSFSDAD LTKYDHHFLNSTLTENKALDKLLERIFPDKEDFAEILDSLNSFLELQELKKLSKVP KDIKRYDIITFKLASLIFKDITLQQAILEENDIEKRLQKII
<b>Research Area</b>	Cell Biology
<b>Source</b>	E.coli
<b>Target Names</b>	lon
<b>Protein Names</b>	Recommended name: Lon protease EC= 3.4.21.53 Alternative name(s): ATP-dependent protease La
<b>Expression Region</b>	1-206aa
<b>Notes</b>	Repeated freezing and thawing is not recommended. Store working aliquots at 4°C for up to one week.
<b>Tag Info</b>	N-terminal 6xHis-SUMO-tagged
<b>Mol. Weight</b>	39.8kDa
<b>Protein Length</b>	Partial
<b>Image</b>	



(Tris-Glycine gel) Discontinuous SDS-PAGE (reduced) with 5% enrichment gel and 15% separation gel.



Based on the SEQUEST from database of E.coli host and target protein, the LC-MS/MS Analysis result of CSB-EP305230MLW could indicate that this peptide derived from E.coli-expressed Mycoplasma pneumoniae (strain ATCC 29342 / M129) Ion.



Based on the SEQUEST from database of E.coli host and target protein, the LC-MS/MS Analysis result of CSB-EP305230MLW could indicate that this peptide derived from E.coli-expressed Mycoplasma pneumoniae (strain ATCC 29342 / M129) Ion.

## Reconstitution

We recommend that this vial be briefly centrifuged prior to opening to bring the contents to the bottom. Please reconstitute protein in deionized sterile water to a concentration of 0.1-1.0 mg/mL. We recommend to add 5-50% of glycerol (final concentration) and aliquot for long-term storage at -20°C/-80°C. Our default final concentration of glycerol is 50%. Customers could use it as reference.

## Shelf Life

The shelf life is related to many factors, storage state, buffer ingredients, storage temperature and the stability of the protein itself. Generally, the shelf life of liquid form is 6 months at -20°C/-80°C. The shelf life of lyophilized form is 12 months at -20°C/-80°C.