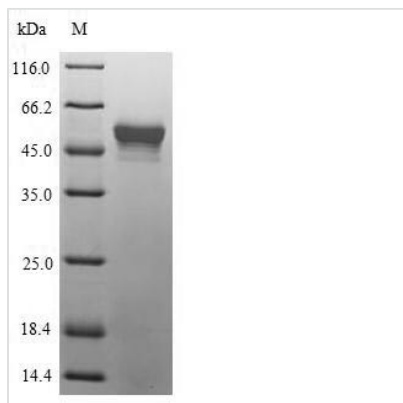


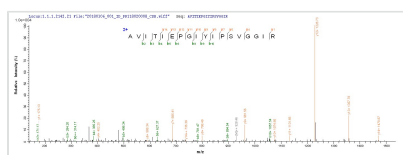


Recombinant Mycoplasma pneumoniae Putative Xaa-Pro aminopeptidase (pepP)

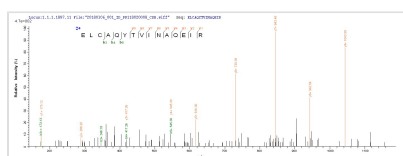
Product Code	CSB-EP303407MLW
Abbreviation	Recombinant Mycoplasma pneumoniae pepP protein
Storage	The shelf life is related to many factors, storage state, buffer ingredients, storage temperature and the stability of the protein itself. Generally, the shelf life of liquid form is 6 months at -20°C/-80°C. The shelf life of lyophilized form is 12 months at -20°C/-80°C.
Uniprot No.	P75313
Alias	Short name: X-Pro aminopeptidase Alternative name(s): Aminoacylproline aminopeptidase Aminopeptidase P Short name: APP
Product Type	Recombinant Protein
Immunogen Species	Mycoplasma pneumoniae (strain ATCC 29342 / M129)
Purity	Greater than 90% as determined by SDS-PAGE.
Sequence	MHNELQQKLAVLHKLLQDNKADAILIGSDQNRFWLTGFPSSAGWLVVHKQRV NLFIDGRYFEAAKTAIDPLVKVELFTTYKQVKALCEQVGVKHLLIEGDYLTFTNYQ NFIKELCAQYTVINAQEIRRQKLPSEILAIEKVVEITRKVAVKLKRFIQPGMTLFI AQWITDQLVKAGGAKNSFDPIVATGKNGANPHHKPSKLKVKSGDFVTCDFGTI YNGYCSDITRTFLVGKKPNNEVLLKAYKKVDEANMAGINAANTQLTGAEVDKV CRDIEASEFKDYFVHSTGHGVGLDIHEMPNVSTSYNKLCCENAVITIEPGIYIPS VGGIRIEDMVLVKDHSVWLSAKIPRAF
Research Area	Microbiology
Source	E.coli
Target Names	pepP
Protein Names	Recommended name: Putative Xaa-Pro aminopeptidase Short name= X-Pro aminopeptidase EC= 3.4.11.9 Alternative name(s): Aminoacylproline aminopeptidase Aminopeptidase P Short name= APP
Expression Region	1-354aa
Notes	Repeated freezing and thawing is not recommended. Store working aliquots at 4°C for up to one week.
Tag Info	N-terminal 6xHis-SUMO-tagged
Mol. Weight	55.6kDa
Protein Length	Full Length
Image	



(Tris-Glycine gel) Discontinuous SDS-PAGE (reduced) with 5% enrichment gel and 15% separation gel.



Based on the SEQUEST from database of E.coli host and target protein, the LC-MS/MS Analysis result of CSB-EP303407MLW could indicate that this peptide derived from E.coli-expressed Mycoplasma pneumoniae (strain ATCC 29342 / M129) pepP.



Based on the SEQUEST from database of E.coli host and target protein, the LC-MS/MS Analysis result of CSB-EP303407MLW could indicate that this peptide derived from E.coli-expressed Mycoplasma pneumoniae (strain ATCC 29342 / M129) pepP.

Reconstitution

We recommend that this vial be briefly centrifuged prior to opening to bring the contents to the bottom. Please reconstitute protein in deionized sterile water to a concentration of 0.1-1.0 mg/mL. We recommend to add 5-50% of glycerol (final concentration) and aliquot for long-term storage at -20°C/-80°C. Our default final concentration of glycerol is 50%. Customers could use it as reference.

Shelf Life

The shelf life is related to many factors, storage state, buffer ingredients, storage temperature and the stability of the protein itself. Generally, the shelf life of liquid form is 6 months at -20°C/-80°C. The shelf life of lyophilized form is 12 months at -20°C/-80°C.