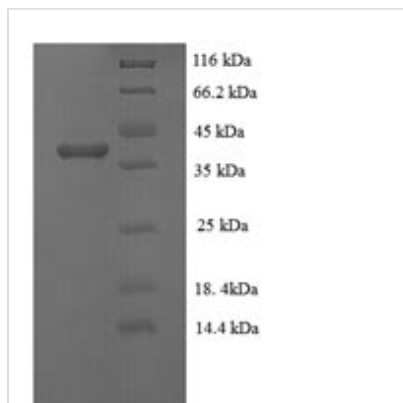




# Recombinant Rabies virus Phosphoprotein (P)

<b>Product Code</b>	CSB-EP303154RAH
<b>Relevance</b>	Non catalytic polymerase cofactor and regulatory protein that plays a role in viral transcription and replication. Stabilizes the RNA polymerase L to the N-RNA tplate and binds the soluble protein N, preventing it from encapsidating non-genomic RNA. Also inhibits host IFN-alpha and IFN-beta signaling by binding and retaining phosphorylated STAT1 in the cytoplasm or by inhibiting the DNA binding of STAT1 in the nucleus. Might be involved, through interaction with host dynein, in intracellular microtubule-dependent virus transport of incoming virus from the synapse toward the cell body .
<b>Abbreviation</b>	Recombinant Rabies virus Phosphoprotein
<b>Storage</b>	The shelf life is related to many factors, storage state, buffer ingredients, storage temperature and the stability of the protein itself. Generally, the shelf life of liquid form is 6 months at -20°C/-80°C. The shelf life of lyophilized form is 12 months at -20°C/-80°C.
<b>Uniprot No.</b>	P69480
<b>Alias</b>	Protein M1
<b>Product Type</b>	Recombinant Protein
<b>Immunogen Species</b>	Rabies virus (strain PM) (RABV)
<b>Purity</b>	Greater than 90% as determined by SDS-PAGE.
<b>Sequence</b>	MSKIFVNPSAIRAGLADLEMAEETVDLINRNIEDNQAHQLQGEPIEVDNLPEDMG RLHLDDGKSPNPGEMAKVGEGKYREDFQMDEGEDPSFLFQSYLENVGVQIV RQMRSGERFLKIWSQTVEEIISYVAVNFPNPPGKSSSEDKSTQTTGRELKKETT PTPSQRESQSSKARMAAQTAGPPALEWSATNEKDDLSEAEIAHQIAESFSK KYKFPSRSSGILLYNFEQLKMNLDIVKEAKNVPGVTRLAHDGSKLPLRCVLG WVALANSKKFQLLVESDKLSKIMQDDLNRYSCTSC
<b>Research Area</b>	Others
<b>Source</b>	E.coli
<b>Target Names</b>	P
<b>Expression Region</b>	1-297aa
<b>Notes</b>	Repeated freezing and thawing is not recommended. Store working aliquots at 4°C for up to one week.
<b>Tag Info</b>	N-terminal 6xHis-tagged
<b>Mol. Weight</b>	37.2kDa
<b>Protein Length</b>	Full Length
<b>Image</b>	



(Tris-Glycine gel) Discontinuous SDS-PAGE (reduced) with 5% enrichment gel and 15% separation gel.

### Reconstitution

We recommend that this vial be briefly centrifuged prior to opening to bring the contents to the bottom. Please reconstitute protein in deionized sterile water to a concentration of 0.1-1.0 mg/mL. We recommend to add 5-50% of glycerol (final concentration) and aliquot for long-term storage at -20°C/-80°C. Our default final concentration of glycerol is 50%. Customers could use it as reference.

### Shelf Life

The shelf life is related to many factors, storage state, buffer ingredients, storage temperature and the stability of the protein itself. Generally, the shelf life of liquid form is 6 months at -20°C/-80°C. The shelf life of lyophilized form is 12 months at -20°C/-80°C.