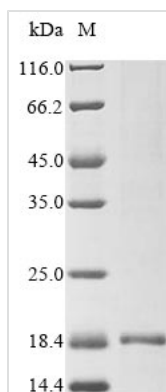




Recombinant Bacillus cereus Enterotoxin, partial

Product Code	CSB-EP302168BQJ
Abbreviation	Recombinant Bacillus cereus Enterotoxin protein, partial
Storage	The shelf life is related to many factors, storage state, buffer ingredients, storage temperature and the stability of the protein itself. Generally, the shelf life of liquid form is 6 months at -20°C/-80°C. The shelf life of lyophilized form is 12 months at -20°C/-80°C.
Uniprot No.	P80568
Product Type	Recombinant Protein
Immunogen Species	Bacillus cereus
Purity	Greater than 90% as determined by SDS-PAGE.
Sequence	AQNVIAPNTLSNSIRMLGSQSPLIQAYG
Research Area	Others
Source	E.coli
Protein Names	Recommended name: EnterotoxinAlternative name(s): 45 kDa protein
Expression Region	1-28aa
Notes	Repeated freezing and thawing is not recommended. Store working aliquots at 4°C for up to one week.
Tag Info	N-terminal 6xHis-KSI-tagged
Mol. Weight	18.3 kDa
Protein Length	Partial

Image



(Tris-Glycine gel) Discontinuous SDS-PAGE (reduced) with 5% enrichment gel and 15% separation gel.

Reconstitution	We recommend that this vial be briefly centrifuged prior to opening to bring the contents to the bottom. Please reconstitute protein in deionized sterile water to a concentration of 0.1-1.0 mg/mL. We recommend to add 5-50% of glycerol (final concentration) and aliquot for long-term storage at -20°C/-80°C. Our default final concentration of glycerol is 50%. Customers could use it as reference.
-----------------------	-------------------------------------------------------------------------------------------------------------------------------------------------------------------------------------------------------------------------------------------------------------------------------------------------------------------------------------------------------------------------------------------------------------

Shelf Life	The shelf life is related to many factors, storage state, buffer ingredients,
-------------------	-------------------------------------------------------------------------------



storage temperature and the stability of the protein itself.

Generally, the shelf life of liquid form is 6 months at -20°C/-80°C. The shelf life of lyophilized form is 12 months at -20°C/-80°C.