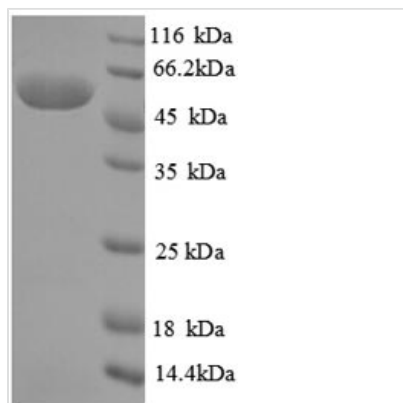


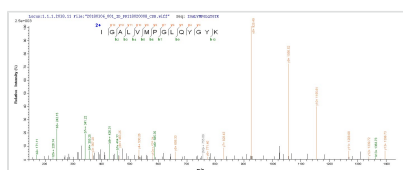


Recombinant *Pseudomonas putida* Creatinine amidohydrolase (crnA)

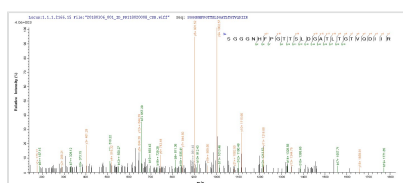
Product Code	CSB-EP028075FFZ
Relevance	Cyclic amidohydrolase that catalyzes the reversible conversion of creatinine to creatine. Is also active toward glycohydrazide, though the reaction rate is very low, but it is completely inert toward hydantoin and its derivatives.
Abbreviation	Recombinant <i>Pseudomonas putida</i> crnA protein
Storage	The shelf life is related to many factors, storage state, buffer ingredients, storage temperature and the stability of the protein itself. Generally, the shelf life of liquid form is 6 months at -20°C/-80°C. The shelf life of lyophilized form is 12 months at -20°C/-80°C.
Uniprot No.	P83772
Alias	Creatininase
Product Type	Recombinant Protein
Immunogen Species	<i>Pseudomonas putida</i> (<i>Arthrobacter siderocapsulatus</i>)
Purity	Greater than 90% as determined by SDS-PAGE.
Sequence	MSKSVFVGELTWKEYEARVAAGDCVLMPLVGALEQHGHHMCMNVDVLLPTA VCKRVAERIGALVMPGLQYGYKSQQKSGGGNHFP GTTSLDGATLTGTVQDIIR ELARHGARRLVLMNGHYENSMFIVEGIDLALRELRYAGIQDFKVVVLSYWDFV KDPAVIQQLYPEGFLGWDIEHGGVFETSLMLALYPDLVDLDRVVDHPPATFPP YDVFPVDPARTPAPGTLSSAKTASREKGELILEVCVQGIADAIREEFPT
Research Area	Others
Source	E.coli
Target Names	crnA
Protein Names	Recommended name:Creatinine amidohydrolaseEC=3.5.2.10Alternative name(s):Creatininase
Expression Region	1-260aa
Notes	Repeated freezing and thawing is not recommended. Store working aliquots at 4°C for up to one week.
Tag Info	N-terminal GST-tagged
Mol. Weight	55.6kDa
Protein Length	Full Length
Image	



(Tris-Glycine gel) Discontinuous SDS-PAGE (reduced) with 5% enrichment gel and 15% separation gel.



Based on the SEQUEST from database of E.coli host and target protein, the LC-MS/MS Analysis result of CSB-EP028075FFZ could indicate that this peptide derived from E.coli-expressed *Pseudomonas putida* (Arthrobacter siderocapsulatus) crnA.



Based on the SEQUEST from database of E.coli host and target protein, the LC-MS/MS Analysis result of CSB-EP028075FFZ could indicate that this peptide derived from E.coli-expressed *Pseudomonas putida* (Arthrobacter siderocapsulatus) crnA.

Reconstitution

We recommend that this vial be briefly centrifuged prior to opening to bring the contents to the bottom. Please reconstitute protein in deionized sterile water to a concentration of 0.1-1.0 mg/mL. We recommend to add 5-50% of glycerol (final concentration) and aliquot for long-term storage at -20°C/-80°C. Our default final concentration of glycerol is 50%. Customers could use it as reference.

Shelf Life

The shelf life is related to many factors, storage state, buffer ingredients, storage temperature and the stability of the protein itself. Generally, the shelf life of liquid form is 6 months at -20°C/-80°C. The shelf life of lyophilized form is 12 months at -20°C/-80°C.