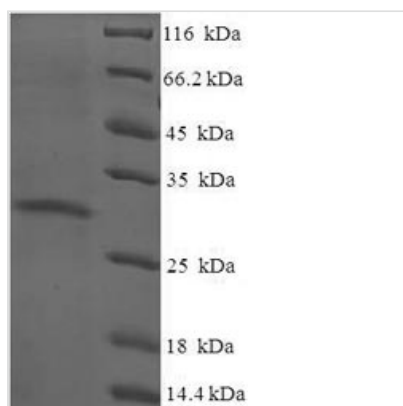




Recombinant Human Protein yippee-like 3 (YPEL3)

Product Code	CSB-EP026272HU
Relevance	Involved in proliferation and apoptosis in myeloid precursor cells.
Abbreviation	Recombinant Human YPEL3 protein
Storage	The shelf life is related to many factors, storage state, buffer ingredients, storage temperature and the stability of the protein itself. Generally, the shelf life of liquid form is 6 months at -20°C/-80°C. The shelf life of lyophilized form is 12 months at -20°C/-80°C.
Uniprot No.	P61236
Product Type	Recombinant Protein
Immunogen Species	Homo sapiens (Human)
Purity	Greater than 90% as determined by SDS-PAGE.
Sequence	MVRISKPKTFQAYLDDCHRRYSCAHCRAHLANHDDLISKSFQGSQGRAYLFN SVVNVGCGPAEERVLLTGLHAVADIHCENCKTTLGWKYEQAFESSQKYKEGK YIIELNHMIKDNGWD
Research Area	Epigenetics and Nuclear Signaling
Source	E.coli
Target Names	YPEL3
Expression Region	1-119aa
Notes	Repeated freezing and thawing is not recommended. Store working aliquots at 4°C for up to one week.
Tag Info	N-terminal 6xHis-SUMO-tagged
Mol. Weight	29.6kDa
Protein Length	Full Length

Image



(Tris-Glycine gel) Discontinuous SDS-PAGE (reduced) with 5% enrichment gel and 15% separation gel.



Description

The recombinant Human YPEL3 was expressed with the amino acid range of 1-119. The calculated molecular weight for this YPEL3 protein is 29.6 kDa. This protein is generated in a e.coli-based system. The N-terminal 6xHis-SUMO tag was smoothly integrated into the coding gene of YPEL3, which enables a simple process of detecting and purifying the YPEL3 recombinant protein in the following steps.

YPEL3, discovered in 2004, belongs to a family of Yippee proteins, comprising five members with conservation observed across various species, even extending to slime molds. YPEL3 has been recognized as a target gene of p53, demonstrating growth-suppressive characteristics by promoting senescence and apoptosis in diverse situations. It plays an important role in tumorigenesis. Numerous studies have shown that YPEL3 inhibits tumor growth, proliferation, and metastasis across various cancer types, including breast tumors and colon tumors.

Reconstitution

We recommend that this vial be briefly centrifuged prior to opening to bring the contents to the bottom. Please reconstitute protein in deionized sterile water to a concentration of 0.1-1.0 mg/mL. We recommend to add 5-50% of glycerol (final concentration) and aliquot for long-term storage at -20°C/-80°C. Our default final concentration of glycerol is 50%. Customers could use it as reference.

Shelf Life

The shelf life is related to many factors, storage state, buffer ingredients, storage temperature and the stability of the protein itself. Generally, the shelf life of liquid form is 6 months at -20°C/-80°C. The shelf life of lyophilized form is 12 months at -20°C/-80°C.