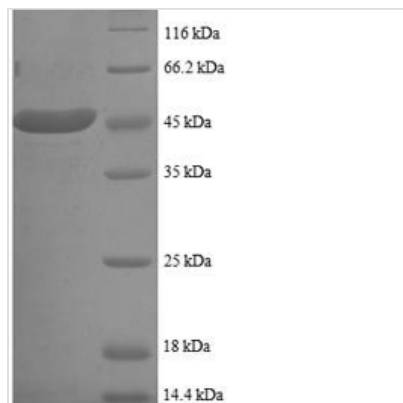




Recombinant Human SUMO-conjugating enzyme UBC9 (UBE2I), partial

Product Code	CSB-EP025457HU1
Relevance	Accepts the ubiquitin-like proteins SUMO1, SUMO2, SUMO3 and SUMO4 from the UBLE1A-UBLE1B E1 complex and catalyzes their covalent attachment to other proteins with the help of an E3 ligase such as RANBP2 or CBX4. Can catalyze the formation of poly-SUMO chains. Necessary for sumoylation of FOXL2 and KAT5. Essential for nuclear architecture and chromosome segregation. Sumoylates p53/TP53 at 'Lys-386'
Abbreviation	Recombinant Human UBE2I protein, partial
Storage	The shelf life is related to many factors, storage state, buffer ingredients, storage temperature and the stability of the protein itself. Generally, the shelf life of liquid form is 6 months at -20°C/-80°C. The shelf life of lyophilized form is 12 months at -20°C/-80°C.
Uniprot No.	P63279
Alias	SUMO-protein ligase Ubiquitin carrier protein 9 Ubiquitin carrier protein I Ubiquitin-conjugating enzyme E2 I Ubiquitin-protein ligase Ip18
Product Type	Recombinant Protein
Immunogen Species	Homo sapiens (Human)
Purity	Greater than 90% as determined by SDS-PAGE.
Sequence	MSGIALSRLAQERKAWRKDHPFGFVAVPTKNPDGTMNLMNWECAIPGKKKGTP WEGGLFKLRMLFKDDYPSSPPKCKFEPLFHPNVYPSGTVCLSILEEDKDWR PAITIKQILLGIQELLNEPNIQDPAQAEAYTIYCQNRVEYEKRVRAQAKKFAP
Research Area	Cell Cycle
Source	E.coli
Target Names	UBE2I
Expression Region	1-157aa
Notes	Repeated freezing and thawing is not recommended. Store working aliquots at 4°C for up to one week.
Tag Info	N-terminal GST-tagged
Mol. Weight	44.9kDa
Protein Length	Partial
Image	



(Tris-Glycine gel) Discontinuous SDS-PAGE (reduced) with 5% enrichment gel and 15% separation gel.

Description

CUSABIO synthesized the recombinant gene by integrating the N-terminal GST tag sequence into the targeted gene encoding the 1-157aa of the human UBE2I. The synthesized gene was subsequently cloned into an expression vector. After cloning, the expression vector was introduced into the E.coli for expression. The product was purified to obtain the recombinant human UBE2I protein carrying N-terminal GST tag. The SDS-PAGE assayed the purity of this recombinant UBE2I protein greater than 90%. This UBE2I protein migrated along the gel to a band of about 45 kDa molecular weight.

UBE2I is a gene providing instruction of making a protein named SUMO-conjugating enzyme UBC9 (also called Ubiquitin-protein ligase I and abbreviated as p18) in human and belongs to Ubiquitin-conjugating enzyme family. SUMO is an abbreviated form of small ubiquitin-like modifiers. SUMOylation is a process of covalent and reversible attaching of SUMO moiety to a target protein and is an important post-translational modification involved in various cellular processes. UBC9 is the unique SUMO E2 enzyme known to conjugate SUMO to target substrates. The UBC9 serves as a lynchpin in the SUMO conjugation pathway, interacting with the SUMO E1 during activation.

Reconstitution

We recommend that this vial be briefly centrifuged prior to opening to bring the contents to the bottom. Please reconstitute protein in deionized sterile water to a concentration of 0.1-1.0 mg/mL. We recommend to add 5-50% of glycerol (final concentration) and aliquot for long-term storage at -20°C/-80°C. Our default final concentration of glycerol is 50%. Customers could use it as reference.

Shelf Life

The shelf life is related to many factors, storage state, buffer ingredients, storage temperature and the stability of the protein itself. Generally, the shelf life of liquid form is 6 months at -20°C/-80°C. The shelf life of lyophilized form is 12 months at -20°C/-80°C.