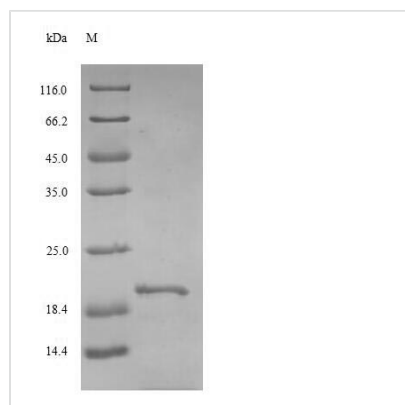




Recombinant Rat Thyrotropin subunit beta (Tshb)

Product Code	CSB-EP025130RA
Relevance	Indispensable for the control of thyroid structure and metabolism.
Abbreviation	Recombinant Rat Tshb protein
Storage	The shelf life is related to many factors, storage state, buffer ingredients, storage temperature and the stability of the protein itself. Generally, the shelf life of liquid form is 6 months at -20°C/-80°C. The shelf life of lyophilized form is 12 months at -20°C/-80°C.
Uniprot No.	P04652
Product Type	Recombinant Protein
Immunogen Species	Rattus norvegicus (Rat)
Purity	Greater than 85% as determined by SDS-PAGE.
Sequence	FCIPTEYMMYVDRRECAAYCLTINTTICAGYCMTRDINGKLFPLKYALSQDVCTY RDFTYRTVEIPGCPHHVAPYFSYPVALSCKCGKCN TDYSDCTHEAVKTN YCTK PQTFY
Research Area	Signal Transduction
Source	E.coli
Target Names	Tshb
Protein Names	Thyroid-stimulating hormone subunit beta
Expression Region	21-132aa
Notes	Repeated freezing and thawing is not recommended. Store working aliquots at 4°C for up to one week.
Tag Info	N-terminal 10xHis-tagged and C-terminal Myc-tagged
Mol. Weight	19.9 kDa
Protein Length	Full Length of Mature Protein

Image



(Tris-Glycine gel) Discontinuous SDS-PAGE (reduced) with 5% enrichment gel and 15% separation gel.

Description



To prepare this Recombinant Rat Tshb protein, the recombinant DNA was required, which was generated by fusing the Tshb gene with N-terminal 10xHis tag and C-terminal Myc tag sequence. Once the recombinant DNA was amplified and purified, a protein expression system, E.coli, was needed for this Tshb protein production. After purification, a premium Tshb recombinant protein was obtained. According to SDS-PAGE, its purity turns out to be 85%+.

Tshb is a gene encoding a protein named thyrotropin subunit beta (also commonly called TSH-B or TSH-beta). The protein encoded by this gene and the α subunit together makes up thyroid stimulating hormone (TSH), which stimulates the thyroid gland to produce thyroxine. Then, triiodothyronine stimulates the metabolism of almost every tissue in the body. In terms of TSH, α subunit is common to pituitary gonadotropins, whereas the β subunit is TSH-specific, providing receptor specificity.

Reconstitution

We recommend that this vial be briefly centrifuged prior to opening to bring the contents to the bottom. Please reconstitute protein in deionized sterile water to a concentration of 0.1-1.0 mg/mL. We recommend to add 5-50% of glycerol (final concentration) and aliquot for long-term storage at -20°C/-80°C. Our default final concentration of glycerol is 50%. Customers could use it as reference.

Shelf Life

The shelf life is related to many factors, storage state, buffer ingredients, storage temperature and the stability of the protein itself. Generally, the shelf life of liquid form is 6 months at -20°C/-80°C. The shelf life of lyophilized form is 12 months at -20°C/-80°C.