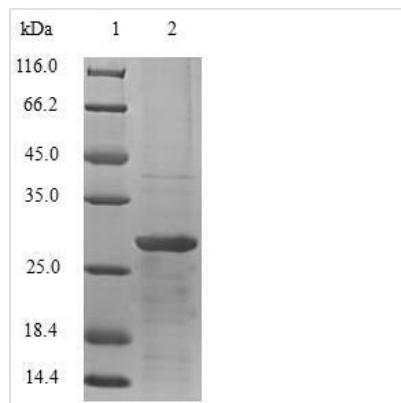




Recombinant Human Thyrotropin subunit beta (TSHB)

Product Code	CSB-EP025130HU
Relevance	Indispensable for the control of thyroid structure and metabolism.
Abbreviation	Recombinant Human TSHB protein
Storage	The shelf life is related to many factors, storage state, buffer ingredients, storage temperature and the stability of the protein itself. Generally, the shelf life of liquid form is 6 months at -20°C/-80°C. The shelf life of lyophilized form is 12 months at -20°C/-80°C.
Uniprot No.	P01222
Alias	Thyroid-stimulating hormone subunit beta ;TSH-B ;TSH-betaThyrotropin beta chainINN: Thyrotropin alfa
Product Type	Recombinant Protein
Immunogen Species	Homo sapiens (Human)
Purity	Greater than 90% as determined by SDS-PAGE.
Sequence	FCIPTEYTMHIERRECA YCLTINTTICAGYCMTRDINGKLF LPKYALSQDVCTYR DFIYRTVEIPGCPLHVAPYFSYPVALSCKCGKCNTDYSDCIHEAIKTN YCTKPQ KSY
Research Area	Signal Transduction
Source	E.coli
Target Names	TSHB
Expression Region	21-132aa
Notes	Repeated freezing and thawing is not recommended. Store working aliquots at 4°C for up to one week.
Tag Info	N-terminal 6xHis-SUMO-tagged
Mol. Weight	28.9kDa
Protein Length	Full Length of Mature Protein
Image	



(Tris-Glycine gel) Discontinuous SDS-PAGE (reduced) with 5% enrichment gel and 15% separation gel.

Description

The recombinant Human TSHB protein is produced by constructing the recombinant plasmid encoding the Human TSHB protein (21-132aa), transforming recombinant plasmid into e.coli cells, screening the positive e.coli cells and culturing them, and inducing the protein expression. The protein is equipped with a N-terminal 6xHis-SUMO tag. Following expression, the recombinant TSHB protein is isolated and purified from the cell lysate using affinity purification. Denaturing SDS-PAGE is then employed to resolve the resulting recombinant Human TSHB protein. Its purity is greater than 90%.

Reconstitution

We recommend that this vial be briefly centrifuged prior to opening to bring the contents to the bottom. Please reconstitute protein in deionized sterile water to a concentration of 0.1-1.0 mg/mL. We recommend to add 5-50% of glycerol (final concentration) and aliquot for long-term storage at -20°C/-80°C. Our default final concentration of glycerol is 50%. Customers could use it as reference.

Shelf Life

The shelf life is related to many factors, storage state, buffer ingredients, storage temperature and the stability of the protein itself. Generally, the shelf life of liquid form is 6 months at -20°C/-80°C. The shelf life of lyophilized form is 12 months at -20°C/-80°C.