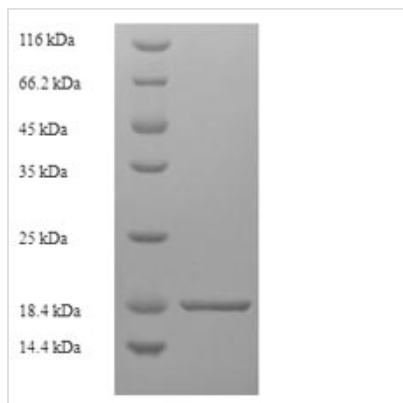




Recombinant Dog Tight junction protein ZO-1 (TJP1), partial

Product Code	CSB-EP023573DO
Relevance	The N-terminal may be involved in transducing a signal required for tight junction assbly, while the C-terminal may have specific properties of tight junctions. The alpha domain might be involved in stabilizing junctions. Plays a role in the regulation of cell migration by targeting CDC42BPB to the leading edge of migrating cells .
Abbreviation	Recombinant Dog TJP1 protein, partial
Storage	The shelf life is related to many factors, storage state, buffer ingredients, storage temperature and the stability of the protein itself. Generally, the shelf life of liquid form is 6 months at -20°C/-80°C. The shelf life of lyophilized form is 12 months at -20°C/-80°C.
Uniprot No.	O97758
Alias	Tight junction protein 1Zona occludens protein 1Zonula occludens protein 1
Product Type	Recombinant Protein
Immunogen Species	Canis lupus familiaris (Dog) (Canis familiaris)
Purity	Greater than 90% as determined by SDS-PAGE.
Sequence	VVATARGVFNNNGGVLSSSIETGVSIIIPQGAIPEGVEQEIYFKVCRDNSILPPLDK EKGETLLSPLVMCGPHGLKFLKPVELRLPHCASMTDPGWSFALKSSDSSSGD PKTWQNKCLPGDPNYLVGANCVSVLIDHF
Research Area	Others
Source	E.coli
Target Names	TJP1
Expression Region	1633-1769aa
Notes	Repeated freezing and thawing is not recommended. Store working aliquots at 4°C for up to one week.
Tag Info	N-terminal 6xHis-tagged
Mol. Weight	18.7kDa
Protein Length	Partial
Image	



(Tris-Glycine gel) Discontinuous SDS-PAGE (reduced) with 5% enrichment gel and 15% separation gel.

Reconstitution

We recommend that this vial be briefly centrifuged prior to opening to bring the contents to the bottom. Please reconstitute protein in deionized sterile water to a concentration of 0.1-1.0 mg/mL. We recommend to add 5-50% of glycerol (final concentration) and aliquot for long-term storage at -20°C/-80°C. Our default final concentration of glycerol is 50%. Customers could use it as reference.

Shelf Life

The shelf life is related to many factors, storage state, buffer ingredients, storage temperature and the stability of the protein itself. Generally, the shelf life of liquid form is 6 months at -20°C/-80°C. The shelf life of lyophilized form is 12 months at -20°C/-80°C.