

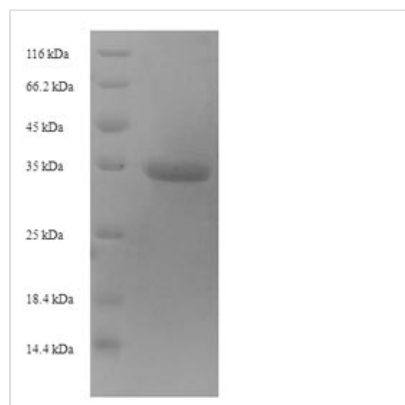


Recombinant Mouse Metalloproteinase inhibitor 1 (Timp1)

Product Code	CSB-EP023560MO
Relevance	Metalloproteinase inhibitor that functions by forming one to one complexes with target metalloproteinases, such as collagenases, and irreversibly inactivates th by binding to their catalytic zinc cofactor. Acts on MMP1, MMP2, MMP3, MMP7, MMP8, MMP9, MMP10, MMP11, MMP12, MMP13 and MMP16. Does not act on MMP14 . Also functions as a growth factor that regulates cell differentiation, migration and cell death and activates cellular signaling cascades via CD63 and ITGB1. Plays a role in integrin signaling. ¹ Publication
Abbreviation	Recombinant Mouse Timp1 protein
Storage	The shelf life is related to many factors, storage state, buffer ingredients, storage temperature and the stability of the protein itself. Generally, the shelf life of liquid form is 6 months at -20°C/-80°C. The shelf life of lyophilized form is 12 months at -20°C/-80°C.
Uniprot No.	P12032
Alias	Collagenase inhibitor 16C8 fibroblastErythroid-potentiating activity ;EPATPA-S1TPA-induced protein;Tissue inhibitor of metalloproteinases 1 ;TIMP-1
Product Type	Recombinant Protein
Immunogen Species	Mus musculus (Mouse)
Purity	Greater than 90% as determined by SDS-PAGE.
Sequence	CSCAPPHPQTAF CNSDLVIRAKFMGSPEINETTLYQRYKIKMTKMLKGFKAVG NAADIRYAYTPVMESLCGYAHKSQNRSEEFITGRLRNGNLHISACSF LVPWR TLSPAQQRAFSKTY SAGCGVCTVFPCL SIPCKLES DTHCLWTDQVLVGSE DY QSRHFACLPRNPGLCTWRSLGAR
Research Area	Others
Source	E.coli
Target Names	Timp1
Protein Names	Recommended name: Metalloproteinase inhibitor 1 Alternative name(s): Collagenase inhibitor 16C8 fibroblast Erythroid-potentiating activity Short name= EPA TPA-S1 TPA-induced protein Tissue inhibitor of metalloproteinases 1
Expression Region	25-205aa
Notes	Repeated freezing and thawing is not recommended. Store working aliquots at 4°C for up to one week.
Tag Info	N-terminal 6xHis-SUMO-tagged
Mol. Weight	36.2kDa
Protein Length	Full Length of Mature Protein



Image



(Tris-Glycine gel) Discontinuous SDS-PAGE (reduced) with 5% enrichment gel and 15% separation gel.

Reconstitution

We recommend that this vial be briefly centrifuged prior to opening to bring the contents to the bottom. Please reconstitute protein in deionized sterile water to a concentration of 0.1-1.0 mg/mL. We recommend to add 5-50% of glycerol (final concentration) and aliquot for long-term storage at -20°C/-80°C. Our default final concentration of glycerol is 50%. Customers could use it as reference.

Shelf Life

The shelf life is related to many factors, storage state, buffer ingredients, storage temperature and the stability of the protein itself. Generally, the shelf life of liquid form is 6 months at -20°C/-80°C. The shelf life of lyophilized form is 12 months at -20°C/-80°C.