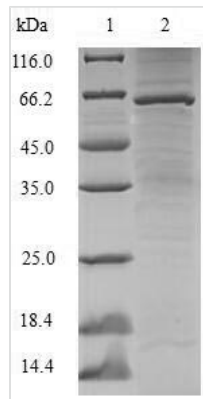




Recombinant Human Lupus La protein (SSB)

Product Code	CSB-EP022705HU
Relevance	Binds to the 3' poly(U) terminus of nascent RNA polymerase III transcripts, protecting th from exonuclease digestion and facilitating their folding and maturation.
Abbreviation	Recombinant Human SSB protein
Storage	The shelf life is related to many factors, storage state, buffer ingredients, storage temperature and the stability of the protein itself. Generally, the shelf life of liquid form is 6 months at -20°C/-80°C. The shelf life of lyophilized form is 12 months at -20°C/-80°C.
Uniprot No.	P05455
Alias	La autoantigen;La ribonucleoprotein;Sjogren syndrome type B antigen ;SS-B
Product Type	Recombinant Protein
Immunogen Species	Homo sapiens (Human)
Purity	Greater than 90% as determined by SDS-PAGE.
Sequence	MAENGDNEKMAALEAKICHQIEYYFGDFNLPRDKFLKEQIKLDEGWVPLEIMIK FNRLNRLTTDFNVIVEALSKSKAELMEISEDKTKIRRRSPSKPLPEVTDEYKNDVK NRSVYIKGFPTDATLDDIKEWLEDKGQVLNIQMRRTLHKAFKGSIFVVFDSIESA KKFVETPGQKYKETDLLILFKDDYFAKKNEERKQNKVEAKLRAKQEQEAKQKL EEDAEMKSLEEKIGCLLKFSGLDDQTCREDLHILFSNHGEIKWIDFVRGAKEG IILFKEKAKEALGKAKDANNGNLQLRNKEVTWEVLEGEVEKEALKKIIEDQQESL NKKWKSIGRRFKGKGGKGNKAAQPGSGKGVQFQGGKTKFASDDEHDEHDEN GATGPVKRAREETDKEEPASKQQKTENGAGDQ
Research Area	Epigenetics and Nuclear Signaling
Source	E.coli
Target Names	SSB
Protein Names	Recommended name: Lupus La protein Alternative name(s): La autoantigen La ribonucleoprotein Sjogren syndrome type B antigen Short name= SS-B
Expression Region	1-408aa
Notes	Repeated freezing and thawing is not recommended. Store working aliquots at 4°C for up to one week.
Tag Info	N-terminal 6xHis-SUMO-tagged
Mol. Weight	62.8kDa
Protein Length	Full Length
Image	



(Tris-Glycine gel) Discontinuous SDS-PAGE (reduced) with 5% enrichment gel and 15% separation gel.

Description

Empower your epigenetics and nuclear signaling research with our premium-quality Recombinant Human SSB protein. The Lupus La protein, also known as SSB, plays a crucial role in RNA processing, stability, and maturation. It is a prominent target for the production of autoantibodies in patients with autoimmune disorders such as systemic lupus erythematosus (SLE) and Sjögren's syndrome. Investigating the function and regulation of this protein offers valuable insights into RNA metabolism and autoimmunity.

Our Recombinant Human SSB protein has been meticulously produced in *E. coli*, ensuring a robust and reliable expression system. The full-length protein (1-408 amino acids) is designed to retain the structural and functional properties of the native protein, enabling accurate and meaningful experimental results. The N-terminal 6xHis-SUMO-tag allows for efficient purification while maintaining the bioactivity of the protein. With a purity of greater than 90% as determined by SDS-PAGE, this Recombinant Human SSB protein is an excellent choice for advancing your epigenetics and nuclear signaling research. Choose our high-quality protein to elevate your experiments and uncover new insights into RNA metabolism and the molecular basis of autoimmunity.

Reconstitution

We recommend that this vial be briefly centrifuged prior to opening to bring the contents to the bottom. Please reconstitute protein in deionized sterile water to a concentration of 0.1-1.0 mg/mL. We recommend to add 5-50% of glycerol (final concentration) and aliquot for long-term storage at -20°C/-80°C. Our default final concentration of glycerol is 50%. Customers could use it as reference.

Shelf Life

The shelf life is related to many factors, storage state, buffer ingredients, storage temperature and the stability of the protein itself. Generally, the shelf life of liquid form is 6 months at -20°C/-80°C. The shelf life of lyophilized form is 12 months at -20°C/-80°C.