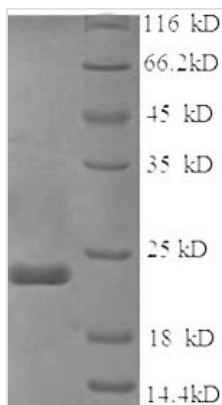




Recombinant Mouse Sex-determining region Y protein (Sry), partial

Product Code	CSB-EP022699MO
Relevance	Transcriptional regulator that controls a genetic switch in male development. It is necessary and sufficient for initiating male sex determination by directing the development of supporting cell precursors (pre-Sertoli cells) as Sertoli rather than granulosa cells. In male adult brain involved in the maintenance of motor functions of dopaminergic neurons . Involved in different aspects of gene regulation including promoter activation or repression. SRY HMG box recognizes DNA by partial intercalation in the minor groove. Promotes DNA bending. Also involved in pre-mRNA splicing . Binds to the DNA consensus sequence 5'-[AT]AACAA[AT]-3'.1 Publication
Abbreviation	Recombinant Mouse Sry protein, partial
Storage	The shelf life is related to many factors, storage state, buffer ingredients, storage temperature and the stability of the protein itself. Generally, the shelf life of liquid form is 6 months at -20°C/-80°C. The shelf life of lyophilized form is 12 months at -20°C/-80°C.
Uniprot No.	Q05738
Alias	Testis-determining factor
Product Type	Recombinant Protein
Immunogen Species	Mus musculus (Mouse)
Purity	Greater than 90% as determined by SDS-PAGE.
Sequence	MEGHVKRPMNAFMVWSRGERHKLAQQNPSMQNTEISKQLGCRWKSLEAE KRPFFQEAQRLKILHREKYPNYKYQPHRRAKVSQSRGILQPAVASTKLYNLLQ WDRNPHAITYRQDWSRAAHLYSKNQQSFYWQPVDIPTGHLQ
Research Area	Others
Source	E.coli
Target Names	Sry
Expression Region	1-144aa
Notes	Repeated freezing and thawing is not recommended. Store working aliquots at 4°C for up to one week.
Tag Info	N-terminal 6xHis-tagged
Mol. Weight	21.2kDa
Protein Length	Partial
Image	



(Tris-Glycine gel) Discontinuous SDS-PAGE (reduced) with 5% enrichment gel and 15% separation gel.

Reconstitution

We recommend that this vial be briefly centrifuged prior to opening to bring the contents to the bottom. Please reconstitute protein in deionized sterile water to a concentration of 0.1-1.0 mg/mL. We recommend to add 5-50% of glycerol (final concentration) and aliquot for long-term storage at -20°C/-80°C. Our default final concentration of glycerol is 50%. Customers could use it as reference.

Shelf Life

The shelf life is related to many factors, storage state, buffer ingredients, storage temperature and the stability of the protein itself. Generally, the shelf life of liquid form is 6 months at -20°C/-80°C. The shelf life of lyophilized form is 12 months at -20°C/-80°C.