

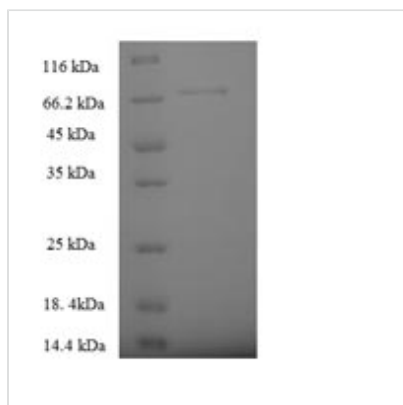


Recombinant Human Serine palmitoyltransferase 2 (SPTLC2), partial

Product Code	CSB-EP022640HU
Relevance	Serine palmitoyltransferase (SPT). The heterodimer formed with LCB1/SPTLC1 constitutes the catalytic core. The composition of the serine palmitoyltransferase (SPT) complex determines the substrate preference. The SPTLC1-SPTLC2-SPTSSA complex shows a strong preference for C16-CoA substrate, while the SPTLC1-SPTLC2-SPTSSB complex displays a preference for C18-CoA substrate.
Abbreviation	Recombinant Human SPTLC2 protein, partial
Storage	The shelf life is related to many factors, storage state, buffer ingredients, storage temperature and the stability of the protein itself. Generally, the shelf life of liquid form is 6 months at -20°C/-80°C. The shelf life of lyophilized form is 12 months at -20°C/-80°C.
Uniprot No.	O15270
Alias	Long chain base biosynthesis protein 2 ;LCB 2Long chain base biosynthesis protein 2a ;LCB2a;Serine-palmitoyl-CoA transferase 2 ;SPT 2
Product Type	Recombinant Protein
Immunogen Species	Homo sapiens (Human)
Purity	Greater than 90% as determined by SDS-PAGE.
Sequence	<p>RDFLRYWRIEKCHHATEREEQKDFVSLYQDFENFYTRNLYMRIRDNWNRPICS</p> <p>VPGARVDIMERQSHDYNWSFKYTGNIKGVINMGSYNYLGFARNTGSCQEAA</p> <p>AKVLEEYGAGVCSTRQEIGNLDKHEELEELVARFLGVEAAMAYGMGFATNSM</p> <p>NIPALVGKGCLILSDELNHASLVLGARLSGATIRIFKHNNMQSLEKLLKDAIVYG</p> <p>QPRTRRPWKKILILVEGIYSMEGSIVRLPEVIALKKKYKAYLYLDEAHSIGALGPT</p> <p>GRGVVEYFGLDPEDVDVMMGTFTKSGASGGYIGGKELIDYLRTHSHSAVY</p> <p>ATSLSPPVVEQIITSMKCIMGQDGTSLGKECVQQLAENTRYFRRRLKEMGFIY</p> <p>GNEDSPVVPLMLYMPAKIGAFGREMLKRNIGVVVVGFPATPIIESRARFCLSAA</p> <p>HTKEILDALKEIDEVGDLLQLKYSRHLVPLLDLPFDETTYEETED</p>
Research Area	Cancer
Source	E.coli
Target Names	SPTLC2
Expression Region	88-562aa
Notes	Repeated freezing and thawing is not recommended. Store working aliquots at 4°C for up to one week.
Tag Info	N-terminal 6xHis-SUMO-tagged
Mol. Weight	69.7kDa
Protein Length	Partial



Image



(Tris-Glycine gel) Discontinuous SDS-PAGE (reduced) with 5% enrichment gel and 15% separation gel.

Reconstitution

We recommend that this vial be briefly centrifuged prior to opening to bring the contents to the bottom. Please reconstitute protein in deionized sterile water to a concentration of 0.1-1.0 mg/mL. We recommend to add 5-50% of glycerol (final concentration) and aliquot for long-term storage at -20°C/-80°C. Our default final concentration of glycerol is 50%. Customers could use it as reference.

Shelf Life

The shelf life is related to many factors, storage state, buffer ingredients, storage temperature and the stability of the protein itself. Generally, the shelf life of liquid form is 6 months at -20°C/-80°C. The shelf life of lyophilized form is 12 months at -20°C/-80°C.