

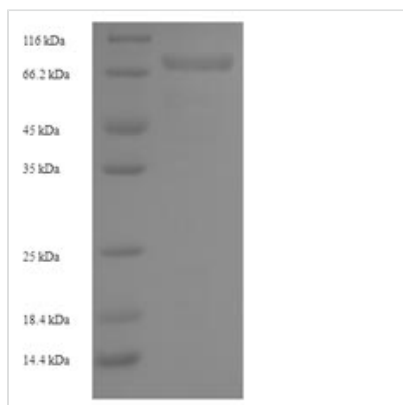


# Recombinant Human Hyaluronidase PH-20 (SPAM1)

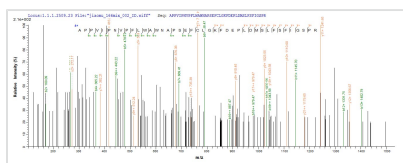
<b>Product Code</b>	CSB-EP022471HU
<b>Relevance</b>	Involved in sperm-egg adhesion. Upon fertilization sperm must first penetrate a layer of cumulus cells that surrounds the egg before reaching the zona pellucida. The cumulus cells are bedded in a matrix containing hyaluronic acid which is formed prior to ovulation. This protein aids in penetrating the layer of cumulus cells by digesting hyaluronic acid.
<b>Abbreviation</b>	Recombinant Human SPAM1 protein
<b>Storage</b>	The shelf life is related to many factors, storage state, buffer ingredients, storage temperature and the stability of the protein itself. Generally, the shelf life of liquid form is 6 months at -20°C/-80°C. The shelf life of lyophilized form is 12 months at -20°C/-80°C.
<b>Uniprot No.</b>	P38567
<b>Alias</b>	Hyaluronoglucosaminidase PH-20Sperm adhesion molecule 1Sperm surface protein PH-20
<b>Product Type</b>	Recombinant Protein
<b>Immunogen Species</b>	Homo sapiens (Human)
<b>Purity</b>	Greater than 90% as determined by SDS-PAGE.
<b>Sequence</b>	LNFRAPPVIPNVPFLWAWNAPSEFCLGKFDEPLDMSLFSFIGSPRINATGQGV TIFYVDRLGYYPYIDSITGVTVNGGIPQKISLQDHLDAKAKDITFYMPVDNLGMA VIDWEEWRPTWARNWKPKDVYKNRSIELVQQQNVLQSLTEATEKAKQEFKA GKDFLVETIKLGKLLRPNHLWGYYLFPDCYNHHYKPGYNGSCFNVEIKRND LSWLWNESTALYPSIYLNTQQSPVAATLYVRNRVREAIRVSKIPDAKSPLPVFA YTRIVFTDQVLKFLSQDELVYTFGETVALGASGIVIWGTLSIMRSMKSCLLLDNY METILNPYIINVTLAAKMCSQVLCQEQGVCIRKNWNSSDYLHLNPDNFAIQLEK GGKFTVRGKPTLEDLEQFSEKFCSCYSTLSCKEKADVKD TDAVDVCIADGVC IDAFKPPMETEEPQIFYNASPSTLS
<b>Research Area</b>	Cancer
<b>Source</b>	E.coli
<b>Target Names</b>	SPAM1
<b>Expression Region</b>	36-490aa
<b>Notes</b>	Repeated freezing and thawing is not recommended. Store working aliquots at 4°C for up to one week.
<b>Tag Info</b>	N-terminal 6xHis-SUMO-tagged
<b>Mol. Weight</b>	67.9kDa
<b>Protein Length</b>	Full Length of Mature Protein



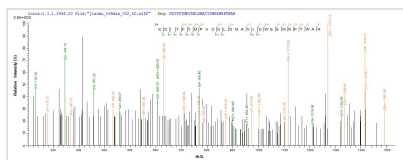
## Image



(Tris-Glycine gel) Discontinuous SDS-PAGE (reduced) with 5% enrichment gel and 15% separation gel.



Based on the SEQUEST from database of E.coli host and target protein, the LC-MS/MS Analysis result of CSB-EP022471HU could indicate that this peptide derived from E.coli-expressed Homo sapiens (Human) SPAM1.



Based on the SEQUEST from database of E.coli host and target protein, the LC-MS/MS Analysis result of CSB-EP022471HU could indicate that this peptide derived from E.coli-expressed Homo sapiens (Human) SPAM1.

## Description

Recombinant Human Hyaluronidase PH-20(SPAM1) is a partial length protein expressed with N-terminal 6xHis-SUMO-tagged in the E.coli. Its expression region corresponds to 36-490aa of human SPAM1 protein. Its purity was determined by SDS-PAGE and reached up to 90% and presented a molecular mass band of 67.9 kDa on the gel. This recombinant SPAM1 protein may be used to synthesize antibodies against SPAM1.

SPAM1 is involved in sperm-egg adhesion. Upon fertilization, sperm must first penetrate a layer of cumulus cells that surrounds the egg before reaching the zona pellucida. The cumulus cells are embedded in a matrix containing hyaluronic acid which is formed prior to ovulation. This protein aids in penetrating the layer of cumulus cells by digesting hyaluronic acid. Diseases associated with SPAM1 include Mucopolysaccharidosis, Type Ix and Aqueous Misdirection.

## Reconstitution

We recommend that this vial be briefly centrifuged prior to opening to bring the contents to the bottom. Please reconstitute protein in deionized sterile water to a concentration of 0.1-1.0 mg/mL. We recommend to add 5-50% of glycerol (final concentration) and aliquot for long-term storage at -20°C/-80°C. Our default final concentration of glycerol is 50%. Customers could use it as reference.

## Shelf Life

The shelf life is related to many factors, storage state, buffer ingredients, storage temperature and the stability of the protein itself.

Generally, the shelf life of liquid form is 6 months at -20°C/-80°C. The shelf life of lyophilized form is 12 months at -20°C/-80°C.